

**KING ARTHUR BLVD.
TRAFFIC CALMING**

Introductions

City Staff

- **David Salmon, PE, City Engineer. 972-219-3491, dsalmon@cityoflewisville.com**
- **Jim Proce, ICMA-CM, Assistant City Manager**
- **Sirwan Shahooei, PHD, PE, PTOE, Sr. Traffic Engineer, 972-219-5027, sshahooei@cityoflewisville.com**
- **Duane Klosterman, Administrative Analyst, 972-219-3735, dklosterman@cityoflewisville.com**

City Consultant - LJA Engineering

- **Scott Booth, PE, PTOE**
- **Breanne Alsobrook, EIT, RAS**

Housekeeping Items & Agenda

Bottled Water

Restrooms

Sign-in Sheet/Comment Forms/Contact Info for other issues.

We must be out of the room by 8:30.

Project History – King Arthur Drive (FM 2281 to Lady of the Lake)

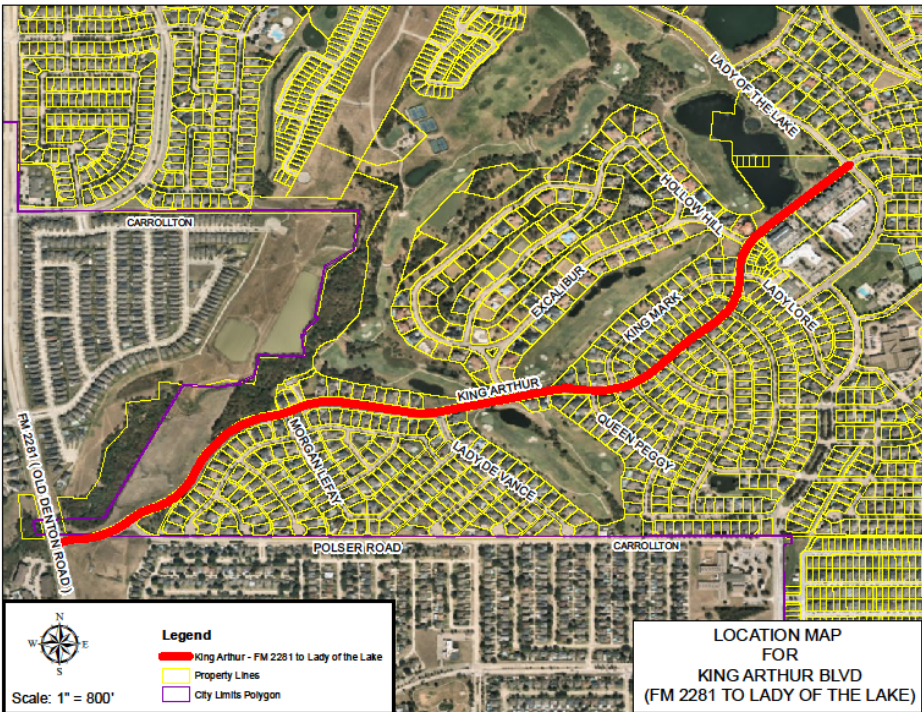
What is Traffic Calming/Options

Speed Limits

Signals & Stop Signs

Proposed Project Details

Discussion and Questions



King Arthur Drive – Constructed in the late 1990's in accordance with the Castle Hills Development Ordinance. 46 feet wide, constructed and functions as a collector street. Current speed limit is 25 MPH. 85th Percentile Speed is 32 MPH, however the majority of people are driving over 25 MPH.

History of speeding concerns and stop sign running.

City has added signage since annexation and has performed targeted enforcement.

Bond Program Proposal, Full re-build Traffic Calming. Over \$25 Million. Was not included in the bond program due to cost and priority

FY 2023. Budgeted \$650,000 for traffic calming.

Project History

What is Traffic Calming

Traffic calming measures consist of horizontal and *vertical obstructions, lane narrowing, roadside and other features that use self-enforcing physical or psycho-perception means to produce slower speeds.

* The City of Lewisville does not use speed humps or speed tables due to negative affects to emergency response times as well as other non-intended consequences.

- Bump-outs.
- Lane Narrowing by moving curbs or other means
- Parking Bays and Bike Lanes
- Painted Crosswalks
- Traffic Control Devices
- Medians
- Traffic Circles/Roundabouts

Traffic Calming Examples



- Set in accordance with the TX Manual of Traffic Control Devices
- Requires Speed Study, 85th Percentile Speed (Residential Street Exception)
- Engineering Judgement
- Enforcement Issues

Speed Limits

Signals & Stop Signs

Traffic Signals:

- \$350,000 to \$800,000 per intersection.
- Locations determined by Warrant Study per the TX Manual of Uniform Traffic Control Devices.
- Staff will conduct a warrant study at King Arthur & Lady of the Lake
- Separate funding issue



Signals & Stop Signs

Stop Signs:

- \$400 per sign for standard stop signs. \$2,500 for solar flashing signs.
- 3/4-way stop locations determined by Warrant Study per the TX Manual of Uniform Traffic Control Devices.
- Psychology behind stop signs.
- Exceptions for unique situations (topography & sight distance)



Proposed Project Details – For Discussion

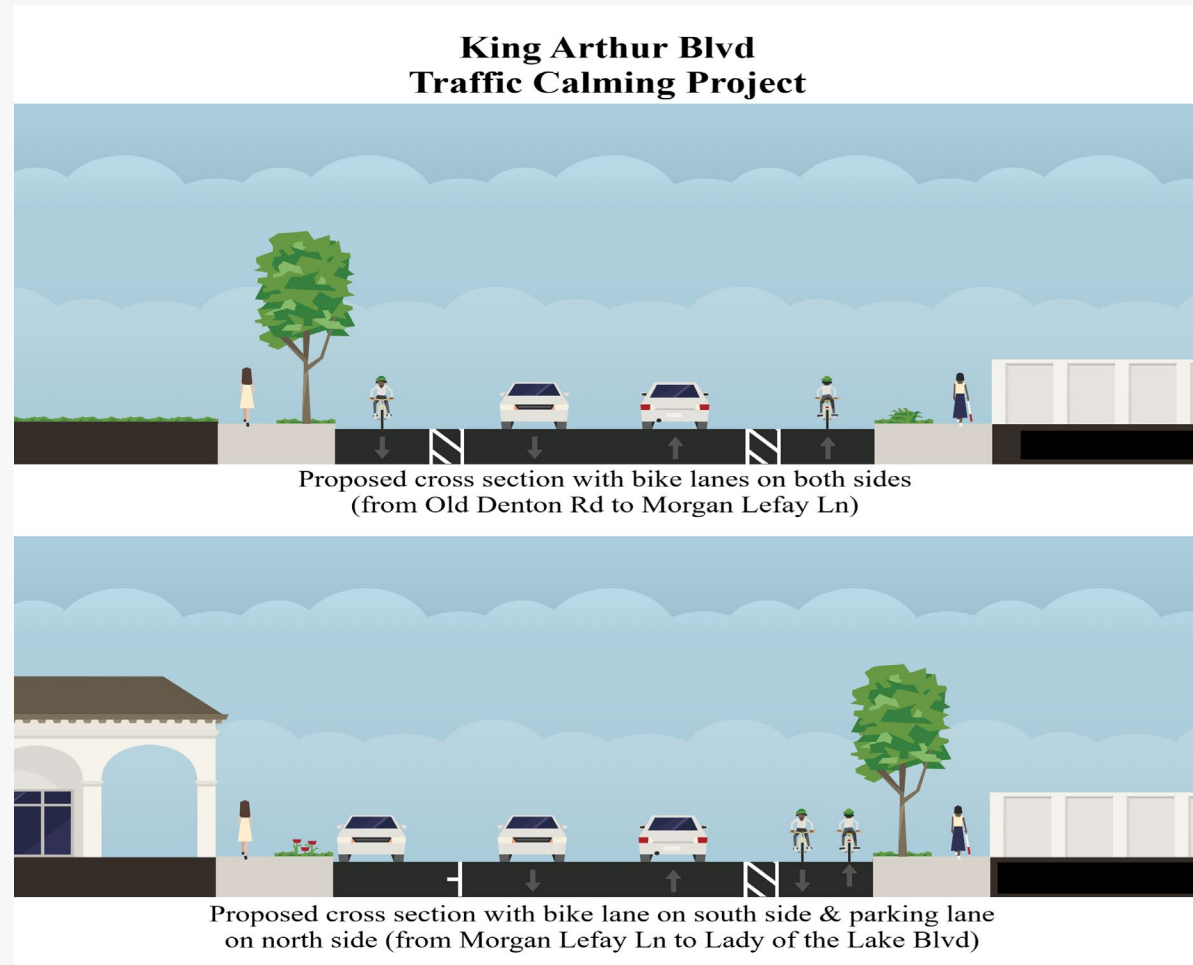
Bump Outs, Design TBD

Bike Lanes

Parking Lane

Crosswalks

Signage



FEEDBACK

Like or dislike? Specific requests?

Comment Cards

Sticky Notes

Talk to staff

Comments can be received via
phone or email until Fri, Nov. 15.