

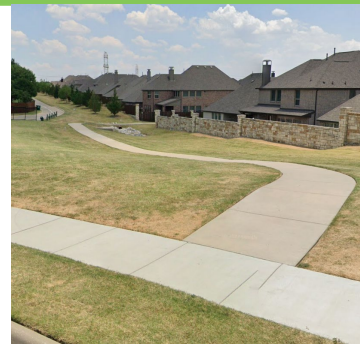
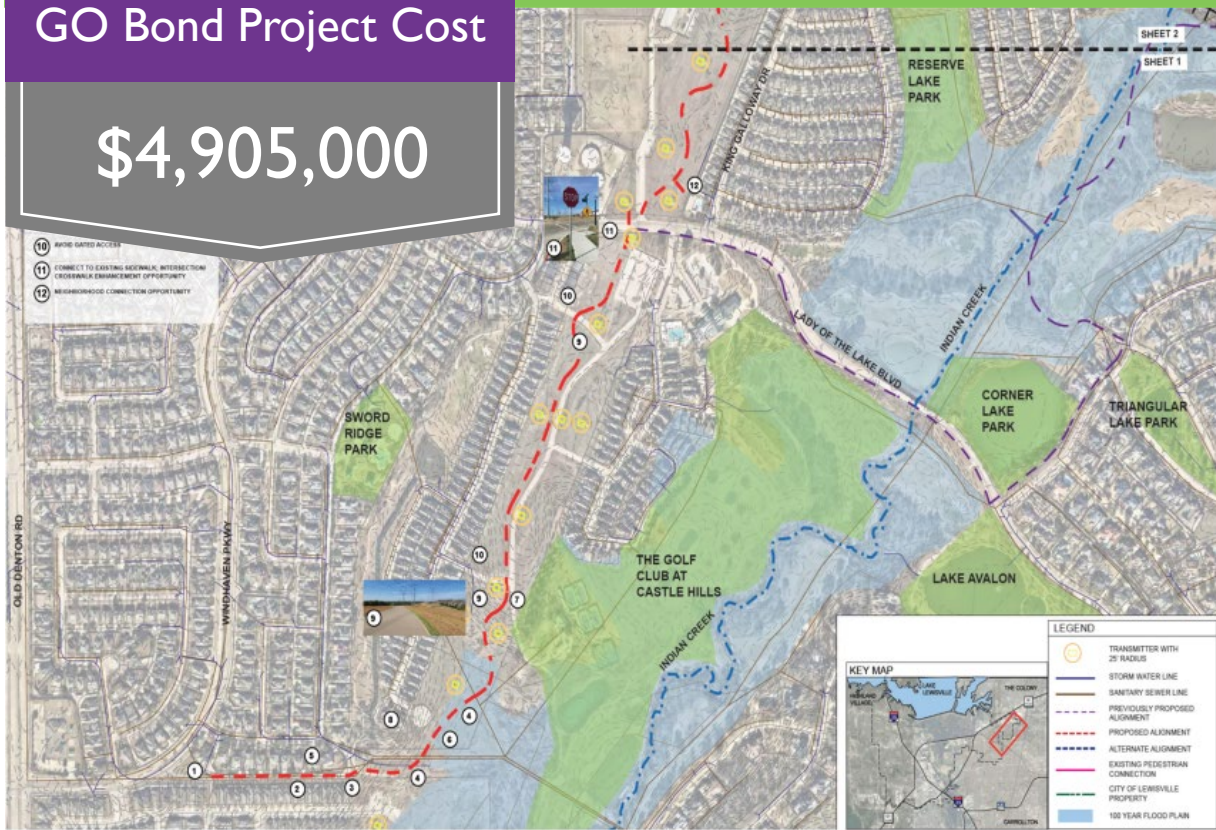


LEWISVILLE
Deep Roots. Broad Wings. Bright Future.

CASTLE HILLS TRAILS CORRIDOR

GO Bond Project Cost

\$4,905,000



Project Details

Proposition

Parks, Open Space, and Recreation Improvements – Proposition C

Location

Castle Hills Area near Windhaven Pkwy and Lady of the Lake Blvd

Description

Phase I of the Castle Hills Trail Development will focus on the southernmost portion of the corridor running from Windhaven Parkway east to the utility easement, then north along the easement to the sports field. The project will include a 12-foot trail, wayfinding signage, trailhead, park furniture, and shade where possible. If funding allows, design of future phases of the planned corridor can be included in the project.

Lewisville 2025 Big Moves / Strategic Moves

#10 Connected City



CASTLE HILLS TRAILS CORRIDOR

Project Cost Breakdown

Design and Parks / Trail Construction (Phase I)	\$4,500,000
Inflation	\$405,000
Total Project Cost	\$4,905,000
City of Lewisville GO Bond Portion	\$4,905,000

Operating Cost Breakdown

To Be Determined