



# 10-MINUTE WALK TO A PARK INITIATIVE - TRAILS AND WALKABILITY CONNECTIONS

LEWISVILLE  
Deep Roots. Broad Wings. Bright Future.

GO Bond Project Cost

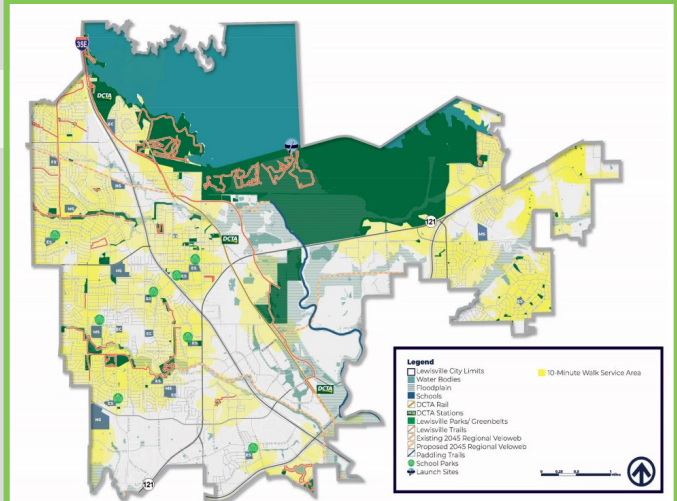
\$2,610,550



## Project Details

Proposition	Parks, Open Space, and Recreation Improvements – Proposition C
Location	City-wide
Description	Enhancements may include widening current trails that do not meet ADA or American Association of Highway and Transportation Officials standards, building small segments of trails or shared-use paths to connect neighborhoods to parks and schools, or adding shared-use paths or bike lanes to street segments lacking pedestrian and bicycle facilities.
Lewisville 2025 Big Moves / Strategic Moves	#10 Connected City
Grant Funding or Third-Party Funding	Project may be eligible for Transportation Enhancement or Alternative Transportation Grants

## Project Location



**77% of residents live within a 10-minute walk to a park**



# 10-MINUTE WALK TO A PARK INITIATIVE - TRAILS AND WALKABILITY CONNECTIONS

**LEWISVILLE**  
Deep Roots. Broad Wings. Bright Future.

## Project Cost Breakdown

Property Acquisition / Land	\$100,000
Right-of-Way	\$25,000
Design	\$215,000
Parks / Trail Construction	\$2,000,000
Furnishings	\$25,000
Sustainability	\$20,000
Other (Public Art)	\$10,000
Inflation	\$215,550
<b>Total Project Cost</b>	<b>\$2,610,550</b>
<b>City of Lewisville GO Bond Portion</b>	<b>\$2,610,550</b>

## Operating Cost Breakdown

To Be Determined