



# SOUTH CHARLES STREET (PURNELL STREET TO I-35E)

LEWISVILLE  
Deep Roots. Broad Wings. Bright Future.

GO Bond Project Cost

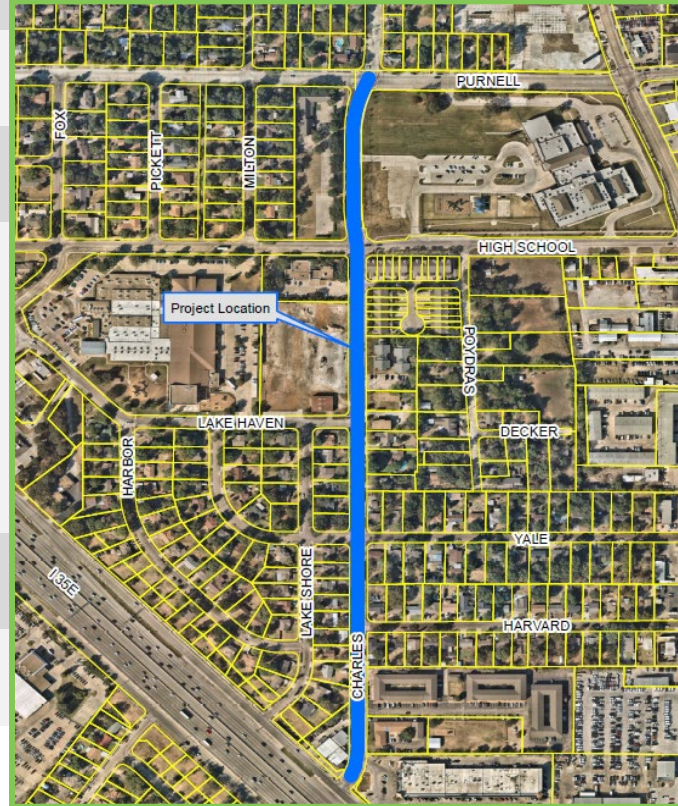
**\$8,712,960**



## Project Details

Proposition	Streets Improvements – Proposition D
Average Pavement Condition Index Value	50.8 (out of 100)
Location	South Charles Street (Purnell Street to I-35E)
Description	Rebuild South Charles Street including ADA-compliant sidewalks, new utilities, upgraded drainage and possible Complete Streets elements, dependent on neighborhood input. This street is a candidate for Complete Streets design based on its location.
Lewisville 2025 Big Moves / Strategic Moves	#4 Diverse and Thriving Neighborhoods
Grant Funding or Third-Party Funding	Denton County Trip-22 Bond Program

## Project Location





**LEWISVILLE**  
Deep Roots. Broad Wings. Bright Future.

# SOUTH CHARLES STREET (PURNELL STREET TO I-35E)

## Project Cost Breakdown

Right-of-Way	\$50,000
Design	\$700,000
Paving Construction	\$3,000,000
Water Construction	\$1,000,000
Sewer Construction	\$1,000,000
Drainage Construction	\$1,500,000
Other (Complete Streets Elements)	\$1,500,000
Inflation	\$4,712,960
<b>Total Project Cost</b>	<b>\$13,462,960</b>
Other Funding Source: Denton County Bond Funding	-\$2,750,000
Other Funding Source: Water & Sewer Fund	-\$2,000,000
<b>City of Lewisville GO Bond Portion</b>	<b>\$8,712,960</b>

## Operating Cost Breakdown

Ongoing – Expenses Related to Complete Streets Elements (Irrigation, Lighting, etc.)	\$11,413
--	----------