

# GREEN CENTERPIECE MASTER STRATEGY

*When one tugs at a single thing in nature, he  
finds it is attached to the rest of the world*

*-John Muir*

Adopted  
Summer 2022



# GREEN CENTERPIECE MASTER STRATEGY PARTNERS



**US Army Corps  
of Engineers®**

**Consultant**



## Table of Contents

Table of Contents .....	1
What is the Green Centerpiece? .....	4
Where is the Green Centerpiece? .....	5
Areas Addressed by the Green Centerpiece Master Strategy .....	6
The Green Centerpiece Partnership .....	9
U. S. Army Corps of Engineers .....	9
City of Lewisville .....	9
University of North Texas .....	9
Lewisville Independent School District.....	9
Friends of LLELA.....	10
Other Stakeholders.....	10
The Master Strategy Process .....	8
Initial Green Centerpiece Master Strategy.....	8
Master Strategy Implementation and Update .....	8
Issues and Opportunities .....	9
Updated Vision Statement.....	10
Updated Guiding Principles.....	10
The Structure of the Green Centerpiece Guiding Principles.....	11
Overall Guiding Principles.....	12
Topical Guiding Principles.....	12
Updated Action Items .....	16
Information on Action Items .....	17
Action Item Number and Name .....	17
Action Item Description .....	17
Desired Outcome .....	17
Lead Entity .....	17
Timing.....	17
Collaborating Entities.....	17
Cost to Operating Partners .....	17
Budget & Funding Sources.....	17
Geographic Focus.....	18

Virtual Focus ..... 18

JEDI Component..... 18

Other Comments..... 18

Green Centerpiece Master Strategy Action Items ..... 18

    Action Item Listing..... 18

    Action Items with Combined Leadership ..... 20

        1. USACE Lease for LLELA Renewal ..... 20

        2. Coordinated Volunteer Management..... 22

        3. Coordinated Green Centerpiece Programming ..... 24

        4. Ongoing Collaborations and Partnerships ..... 26

U.S. Army Corps of Engineers (USACE) Action Items..... 27

    5. Lewisville Lake and LLELA Operations..... 27

    6. White-tailed Deer Management..... 28

    7. Fisheries Management Project ..... 29

    8. Prescribed Burn Management ..... 30

    9. Surveillance ..... 31

City of Lewisville (COL) Action Items ..... 32

    10. Green Centerpiece Marketing Plan..... 32

    11. Green Centerpiece Activities and Events..... 33

    12. Environmentally-Inspired Public Art ..... 34

    13. Residential Native Planting Certification Program..... 35

    14. Participant Evaluations ..... 36

    15. Healthy Infrastructure Plan..... 37

    16. COL Sustainability Plan – Green Centerpiece Master Strategy Component..... 38

    17. Lake Park Master Plan..... 39

    18. LLELA Interpretive Plan Implementation ..... 40

    19. Facilities Maintenance Program ..... 41

    20. Green Centerpiece and Extending the Green Maintenance Program..... 42

    21. Capital Investment in Public Infrastructure within the Green Centerpiece ..... 43

    22. Land Acquisition and Development in the Green Centerpiece and Extended Areas ..... 45

    23. Landfill Redevelopment ..... 46

Lewisville Independent School District (LISD) Action Items ..... 47

    24. 6 – 12 Connections to Real-World Research..... 47

25. K – 5 Natural Science Mentorship Program ..... 48

University of North Texas (UNT) Action Items ..... 49

26. Student Research Activities Support..... 49

27. Native Plant Nursery ..... 50

28. Coursework for LLELA Activities..... 51

29. Restoration Plan Implementation..... 52

30. Plant-a-thon ..... 53

Friends of LLELA (FOLLELA) Action Items ..... 54

31. FOLLELA Agreement..... 54

32. Texas Master Naturalists' Agreement..... 55

33. Outreach and Inclusion Program Support ..... 56

Tracking Progress and Accomplishments ..... 57

    Priorities for 2022..... 57

    On-going Collaborations..... 57

Appendix ..... 58



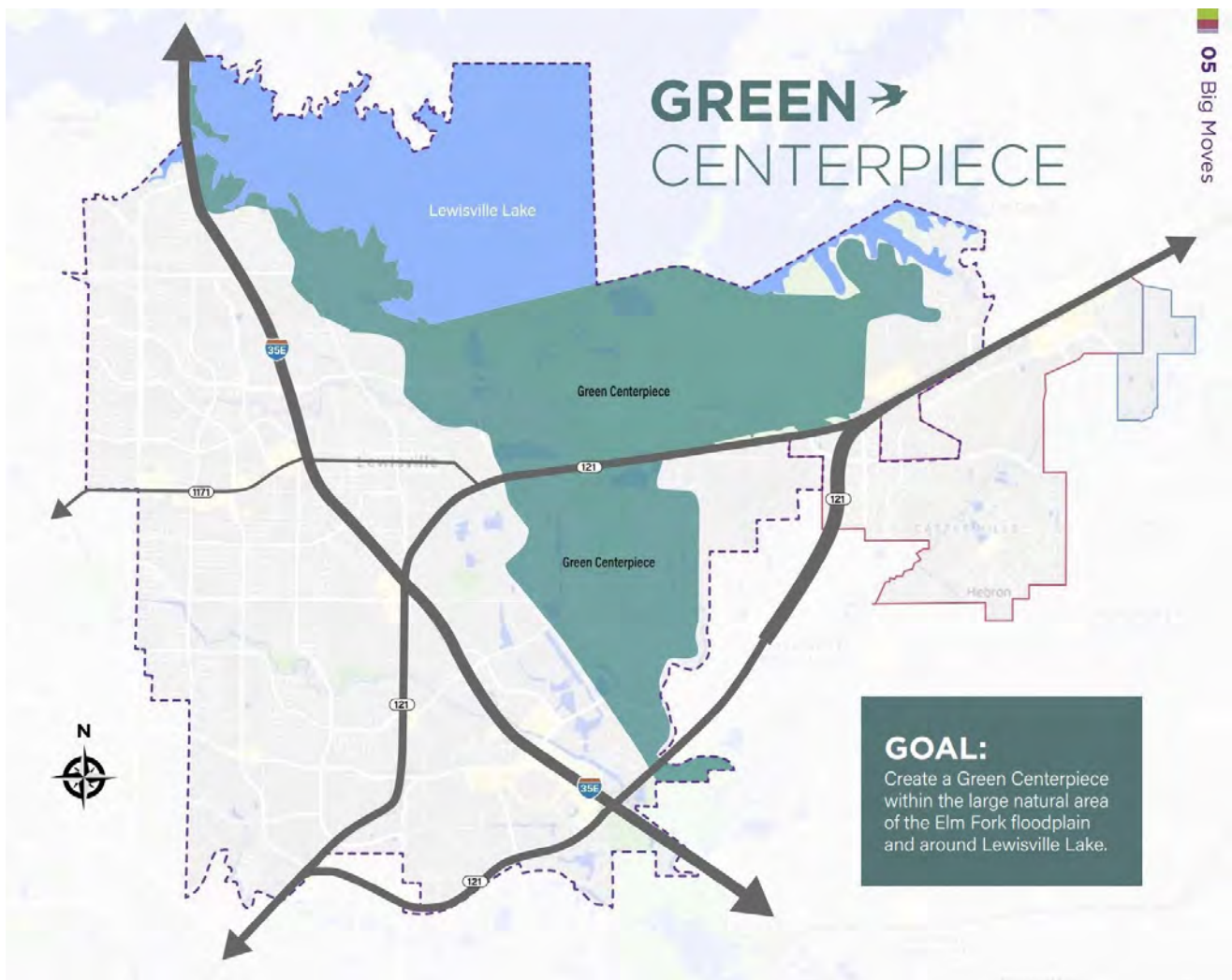
## What is the Green Centerpiece?

The City of Lewisville was founded in 1925, and has grown to become one of the larger cities in an important urban region. In 2013, the Lewisville City Council began a process to create a new vision and plan for the community. The result, *Lewisville 2025*, was adopted unanimously by City Council in 2014. It describes Lewisville's vision for the community it hopes to be by the time of its 100<sup>th</sup> birthday in 2025. As a strategic plan, *Lewisville 2025* focuses on a small number of ideas that will make the most difference in shaping this future community. These are the nine Big Moves detailed in *Lewisville 2025*.

The first Big Move is the Green Centerpiece. Focusing on this natural area as a central part of Lewisville's identity is a notable shift from viewing these areas as simply exclusions from the city's urban fabric. With so many growing communities in the area, the Green Centerpiece offers Lewisville the opportunity to set itself apart.

When the *Lewisville 2025 Vision Plan* was updated in 2021, the new version again retained the Green Centerpiece as the first Big Move. The Green Centerpiece is shown in Exhibit 1. This update builds on the successes achieved since the original vision plan was adopted; it was approved unanimously by the City Council on April 19, 2021.

Exhibit 1: Green Centerpiece



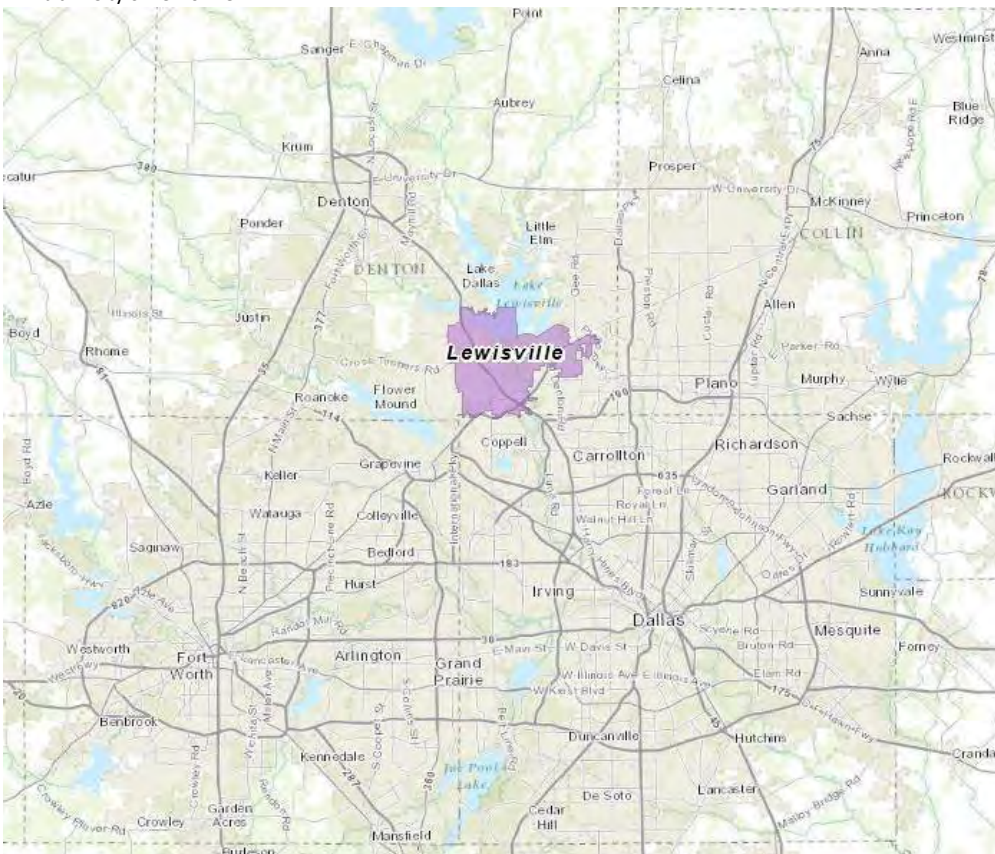
This Green Centerpiece continues a successful, long-standing partnership. The Lewisville Lake Environmental Learning Area (LLELA) includes 2,704 acres of land immediately below the Lewisville Lake dam. Since the 1990's, an agreement between the U.S. Army Corps of Engineers (COE), the University of North Texas (UNT), the Texas A&M Agri-Life Extension and the Lewisville Independent School District (LISD) has provided educational programs, outdoor activities, environmental management and restoration in this area. The programs at LLELA and at the adjacent Lewisville Independent School District Outdoor Learning Area (LISDOLA) have provided natural learning experiences to thousands of school children and other visitors. LLELA is essential to the vision of this Green Centerpiece for Lewisville.

The LLELA partnership agreement was modified in 2015 to remove the Texas A&M Agri-Life Extension. Also in 2015, the responsibility for LLELA's K-12 educational and recreational programs shifted from UNT to the City. The City of Lewisville was formally added to the LLELA lease in 2016. With these changes, the continuing success of LLELA can be leveraged to achieve the vision of a Green Centerpiece for the entire Lewisville community.

## Where is the Green Centerpiece?

Lewisville and this Green Centerpiece are located in the northern part of the North Texas region (also known as the Dallas-Fort Worth Metroplex). This metropolitan area was home to 7.87 million people in 2021 and is the fourth-largest region in the United States. The region is one of the fastest-growing in the nation, and is projected to have 11.2 million residents by 2045. This rapid growth makes North Texas a very attractive region to people and businesses; it also creates pressure on the region's communities and natural environment. The City of Lewisville is 46.96 square miles in size and had 127,008 residents in 2021. As Exhibit 2 shows, Lewisville is located on the southern edge of Lewisville Lake.

Exhibit 2: City of Lewisville





As the name suggests, the Green Centerpiece is centrally located within the City. Exhibit 3 shows the area of the Green Centerpiece. The Central Area of the Green Centerpiece includes the land owned by the Corps of Engineers and operated by the LLELA partnership. The Expanded Area of the Green Centerpiece includes floodplain areas below the Lewisville Lake dam and along the Elm Fork of the Trinity River. Together, the Central and Expanded Areas form a Green Centerpiece of 6,726 acres. The Green Centerpiece includes 24.6% of the land within the current city limits of Lewisville – almost one-quarter of the community’s area! As *Lewisville 2025* states, “the vision for the Green Centerpiece is to promote and protect the area as a public amenity.” The first Action Priority for accomplishing this Big Move is to update the Green Centerpiece Master Strategy to focus on enhancing its role for Lewisville residents, businesses, schools and the community.”



### Areas Addressed by the Green Centerpiece Master Strategy

The Green Centerpiece includes a significant part of the City of Lewisville, as shown in Exhibit 1. This area is the focus of the first Big Move in the Lewisville 2025 vision plan (adopted in 2014 and updated in 2021). Within the Green Centerpiece are several important natural areas and facilities. The Lewisville Lake Environmental Learning Area (LLELA) is owned by the U.S. Army Corps of Engineers and includes areas for environmental management, restoration and recreation. This area is leased to the “Operating Partners” – the University of North Texas, the City of Lewisville and the Lewisville Independent School District. Other important places within the Green Centerpiece include the Lewisville Independent School District Outdoor Learning Area (LISDOLA), Lake Park, a DCTA transit station, Railroad Park and Trinity River kayak launch. These places and facilities are shown in Exhibit 3. The current LLELA Restoration Plan



(completed in 2021) defines twenty management areas within LLELA, each with a particular set of goals and action items for the next five years. These management areas are shown in Exhibit 4.

Exhibit 3: Key Green Centerpiece Places and Facilities

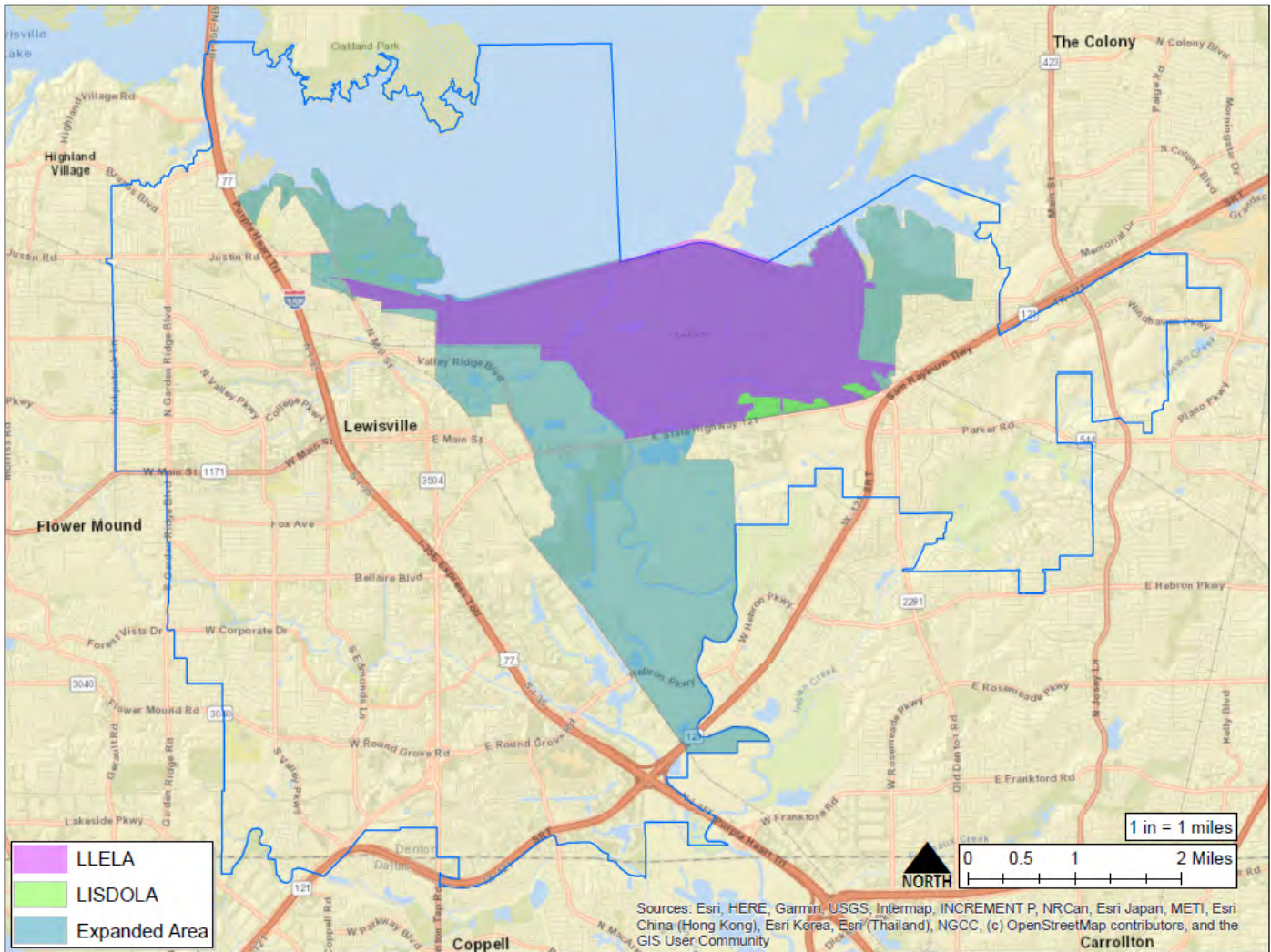


Exhibit 4: LLELA Restoration Plan Management Units



## The Green Centerpiece Partnership

Creation of the Green Centerpiece described in this Master Strategy is not the work of any one individual or organization. It will be most successful if it is achieved through the work of a partnership that brings a diverse range of resources and expertise to the effort. The Operating Partners that have worked together to develop this Master Strategy expect to continue this partnership for its implementation. These organizations are described briefly below.

### U. S. Army Corps of Engineers

The U.S. Army Corps of Engineers (COE) constructed the dam that created Lewisville Lake. It owns the land where the lake is located and land surrounding the lake. Its priorities are to manage the lake itself to provide water storage, flood protection, natural habitat and recreational opportunities. It manages the surrounding lands (those included in the LLELA lease) to benefit fish and wildlife and to retain the habitat on which these species depend.

### City of Lewisville

The City of Lewisville (City) is a general purpose government with a Council-Manager structure. Its policy direction is established by its City Council. The City administration carries out that policy by providing a range of facilities and programs to its residents, property owners and businesses. Through its Parks and Recreation Department, the City manages an extensive parks and recreation system that now includes the educational and recreational programs at LLELA. The City's planning and economic development responsibilities enable it to encourage desirable private development and to discourage uses that are incompatible with this vision. The City's public information resources play a key role in communication and marketing of the Green Centerpiece.

### University of North Texas

The University of North Texas (UNT) is a public university based in Denton, Texas. Its Advanced Environmental Research Institute (AERI) conducts research in the Green Centerpiece area and on issues that are important to management and restoration of environmental resources. Its educational programs bring students to the Green Centerpiece as part of their university coursework.

### Lewisville Independent School District

The Lewisville Independent School District (LISD) serves over 52,000 students in thirteen communities including Lewisville. Its programs provide students from kindergarten through high school with the skills and knowledge they need to succeed throughout their lives. LISD has included environmental education in its programs for many years, including those offered at LLELA and those provided by LISD's own Lewisville Independent School District Outdoor Learning Area (LISDOLA), also located within the Green Centerpiece.



## Friends of LLELA

The Friends of LLELA (Friends) is a non-profit organization established to support the programs and the ecosystem of LLELA. Friends volunteer in a variety of roles, raise funds, and increase awareness of the assets LLELA offers.

## Other Stakeholders

Other organizations also play a role in the future of the Green Centerpiece. Their ideas and support are important to the completion of this Master Strategy, and their involvement will be vital to its implementation. These stakeholders include organizations, agencies and individuals such as:

- Lewisville homeowners and residents, particularly those in neighborhoods in or near the Green Centerpiece
- Recreational users with interests such as birding, hiking, canoeing, kayaking, hunting, fishing, and others
- Past and current funders of LLELA
- Other major property owners in or near the Green Centerpiece
- The operators of landfills in the Expanded Area (DFW Landfill, the Lewisville Landfill, Waste Management, Inc.)
- Utilities with easements in the Green Centerpiece area
- Businesses in the SH 121 Business District
- Upper Trinity Regional Water District
- Garland Power and Light
- Kansas City Southern Railroad
- Lewisville Aquatic Ecosystem Research Facility (LAERF)
- Master naturalist and master gardener groups
- Keep Lewisville Beautiful
- Huffines property holdings
- Denton County Transportation Authority
- Texas Parks and Wildlife Department
- Texas A&M Agri-Life Center
- Boy Scouts of America and Girl Scouts of the United States of America



## The Master Strategy Process

### Initial Green Centerpiece Master Strategy

After adoption of *Lewisville 2025*, the City convened a group of Operating Partners in 2014 to begin discussion of a Green Centerpiece Master Strategy. Key aspects of this process included:

- Agreement on the appropriate roles and responsibilities for each Operating Partner, including a shift of responsibilities for LLELA's K-12 environmental education programs and operations from UNT to the City of Lewisville.
- Collection of information and data about current programs and activities, and the existing physical conditions in the area.
- Dialogue among partners to reach agreement on the issues and opportunities for the Green Centerpiece and on the vision and policy direction to be reflected in the Master Strategy.

The Master Strategy development process began with an initial Operating Partners meeting in January 2015. Changes to the LLELA operations became a focus for discussion and resolution that year. In addition, the Operating Partners shared information about each organization's policies and programs in order to create a shared framework for the Green Centerpiece. They also analyzed the partnership's strengths, weaknesses, opportunities and threats.

Based on this analysis and discussion, the Operating Partners began drafting the Master Strategy in late 2015. This draft Master Strategy, with specific action steps, was refined through continuing discussion with the Operating Partners during early 2016. The initial Green Centerpiece Master Strategy was completed in July 2016.

### Master Strategy Implementation and Update

After creation of the initial Green Centerpiece Master Strategy, the Operating Partners continued existing programs and created new ones to implement the strategy.

A Nature Center design charrette was held in 2017 and all partners agreed on the components of a desired Nature Center and a preferred location within LLELA. The Lewisville City Council made a commitment to fund 100% of the Nature Center capital costs if the other partners approved use agreements for the center. However, changes in the investments and priorities of the other partners meant that they were not able to make these agreements. LISD voters approved a Bond program in 2017 which did not include capital funds for a Nature Center; instead, it funded a substantial improvement to facilities at LISDOLA which provide some of the functions originally envisioned for the Nature Center. Changes in UNT's financial and organization structures meant that the university was also not able to enter into a use agreement.

Other action items were accomplished in the first year after the Master Strategy was approved. To reflect these accomplishments and changes in the Nature Center, the Operating Partners completed an update of this Master Strategy in 2017. After this update, the Operating Partners continued to work together on programs to implement the Master Strategy from 2018 through 2021. They also met periodically each year to share information on programs and investments.

Throughout these years, the Lewisville City Council, the LISD School Board and UNT leadership received briefing on the plan and its implementation, and took actions to support the partnership.

The Operating Partners began updating the Master Strategy in 2021, in order to reflect actions accomplished, areas of focus for the partner organizations, and the experiences of the COVID-19 pandemic during 2020 and 2021. A discussion begun at the Operating Partners' meeting in September of 2021 led to agreement on an updated Vision Statement and a newly-structured set of Guiding Principles. The Partners continued work to revise the Action Items during early 2022. This document reflects these updates by all Partners. This Green Centerpiece Master Strategy was adopted by the Board of Trustees of the Lewisville Independent School District on June 13, 2022. It was approved by the Lewisville City Council on June 20, 2022. The University of North Texas adopted the Master Strategy on July 25, 2022. The formal approval documents for the three partners are found in the Appendix to this report.

## Issues and Opportunities

The Operating Partners are united in the belief that the Green Centerpiece area holds many opportunities to enhance the diverse Lewisville community and enrich the lives of the people who live and work here. The Green Centerpiece has the potential to be an important laboratory for learning and practicing good stewardship of natural and environmental resources in the midst of a major urban area. It can also become an attraction for sustainable economic growth by creating unique locations and incentives for companies whose business models or employees emphasize environmental quality and sustainability.



This Green Centerpiece Master Strategy builds upon the past successes of LLELA and the Operating Partners. It serves as the game plan for coordinated action, by the Operating Partners and others, to fully achieve the Green Centerpiece's potential.

The Operating Partners' discussions about the vision for this important area repeatedly returned to the importance of seven key issues. This Master Strategy addresses these issues and provides direction to achieve the full potential of the Green Centerpiece.

1. The foundation of the Green Centerpiece is the unique natural asset that exists within this area. The plans and projects to carry out the Green Centerpiece vision must protect or enhance the natural ecosystems that are at its heart.
2. The multiple uses and activities envisioned for the Green Centerpiece must be compatible with one another. Decisions are needed about the appropriate locations for specific activities, so

compatible uses can be located together and uses that might compete or conflict with one another are located to minimize conflicts.

3. A collaborative institutional structure must provide long-term coordination, management and oversight of the Green Centerpiece.
4. Financial resources must be secured so the operation of this institutional structure and the various Green Centerpiece programs and activities can continue sustainably over time.
5. Capital investments in a range of facilities can play a vital role in attracting students, visitors, research and support for the Green Centerpiece. Critical decisions must be made about what additional buildings, trails and other facilities are needed to achieve the objectives of this Master Strategy.
6. People and businesses in Lewisville must become much more aware of the resources offered by the Green Centerpiece, so they will make it a part of their everyday lives and their experience of Lewisville.
7. The larger North Texas region can also benefit from the Green Centerpiece. Communications and marketing are needed to increase awareness of this area and to attract new businesses, future residents and visitors from other states and nations.

## Updated Vision Statement

A Vision Statement describes the future that is desired by a community or organization. It is an aspirational statement, not describing the current situation but instead creating an image of the future participants believe is most desirable. Specific principles, policies, decisions and action steps should move the community or organization toward the desired future described in the Vision Statement.

***The Green Centerpiece is a central feature of Lewisville’s identity, an important contributor to environmental management best practices in Texas, and a destination for research, education, restoration and recreation for Lewisville, the North Texas region and the world.***

## Updated Guiding Principles

The Operating Partners agree to use a shared set of Guiding Principles as the basis for their decisions and actions affecting this Green Centerpiece area. Guiding Principles provide direction for decision-makers so their individual choices and investments help to realize the community’s desired future as expressed in the Vision Statement. Since this Green Centerpiece Master Strategy is a shared policy document, its acceptance by the leadership of each Operating Partner will mean that each organization agrees to make its own decisions in a way that helps achieve this vision.

The Green Centerpiece Guiding Principles are listed below. Each principle is phrased as a statement.

## The Structure of the Green Centerpiece Guiding Principles

### Green Centerpiece

**Leaves:** specific action items that achieve the Green Centerpiece vision for the future

**Branches:** particular places within the physical Green Centerpiece, the larger Lewisville community and the virtual world

**Trunk:** the Master Strategy that is the Partners' shared approach to the people and nature of the Green Centerpiece

**Roots:** the Partners of the Green Centerpiece initiative



The roots of the Green Centerpiece are its partner organizations. The U.S. Army Corps of Engineers, the City of Lewisville, the Lewisville Independent School District and the University of North Texas will contribute expertise and resources to grow and expand the reach of the Green Centerpiece.

Like the trunk of a tree, overall principles will guide the decisions, investments and activities related to particular aspects of the Green Centerpiece.

Branching from this trunk, topical principles explain the approach to the most important aspects of the Green Centerpiece.

Leaves on each branch are the action items and programs that partners will undertake to achieve this vision for the Green Centerpiece and the people who connect with it. These actions include initiatives that bring people to specific places within the Green Centerpiece; they also include initiatives that connect people virtually or in other ways.



## Overall Guiding Principles

1. We are committed to identifying and removing barriers and disadvantages in our goal of providing access and opportunities to all people, as we foster healthy and dynamic ecosystems and cultivate a meaningful connection between our community and nearby-nature.
  - a. We strive to give every individual a chance to participate and thrive regardless of their abilities, background, or experience.
  - b. We aim to reflect our community and celebrate our shared experiences, perspectives, and culture.
  - c. It is our intention to create a safe and welcoming environment for those that we serve.
  - d. We are guided by these principles while building the next diverse generation of environmental stewards through environmental education, outdoor recreation, outreach and volunteer engagement.
2. Decisions on uses, activities, infrastructure and other investments throughout the Green Centerpiece will be made so they strengthen its environmental assets and enhance connections to people and communities.
3. Uses, facilities and activities within the Green Centerpiece will be structured so their impacts do not exceed the carrying capacity of the Green Centerpiece's natural systems or threaten the vitality of its ecology.
4. Lewisville's Green Centerpiece initiatives will serve as the basis for collaborations with other North Texas communities with similar initiatives and as the foundation of Lewisville's regional leadership on environmental justice and equity, biodiversity and sustainability issues.
5. Connection to and within Lewisville's Green Centerpiece will be easily accessible, convenient, clearly-marked and inviting for people using various modes of transportation.
6. On-going communications and specific events will provide Lewisville residents with opportunities for everyday interaction with the Green Centerpiece and Lewisville's natural setting, helping them develop a sense of ownership of these natural resources. They also will introduce Lewisville to regional, national and international visitors.

## Topical Guiding Principles

7. **Environmental Management.** Lewisville Lake, the Lewisville Lake Environmental Learning Area (LLELA) and other places within the Green Centerpiece provide important habitat for plants, fish, birds and other wildlife. The quality of this habitat is maintained or enhanced over time through the actions of the partners:
  - a. Lewisville Lake is managed by the U.S. Army Corps Engineers to provide flood protection, water storage, recreational and natural habitat protection opportunities.
  - b. The LLELA area is managed to benefit fish and wildlife and to retain the habitat on which these species depend.

- c. Other natural areas, creeks and corridors are managed by other partners.

8. **Restoration.** Restoration of natural areas will be carried out according to the current LLELA Restoration Plan, enhancing native Texas ecosystems and the North Texas metropolitan area because it:

- a. Recreates the ecology and experience of the area's native prairies.
- b. Restores forested and emergent wetland areas along streams and lake edges.
- c. Redesigns the Trinity River floodway to increase resilience and reduce community impact from droughts, floods and other extreme weather events.



9. **Environmental Research.** Future research studies will extend and build upon past research successes. Research in the Central Area, conducted by UNT's Advanced Environmental Research Institute (AERI) will:

- a. Advance our basic understanding of the complexities of the natural world and develop solutions for environmental problems.
- b. Cultivate active learning experiences steeped in ecological and environmental science.
- c. Train the next generation of environmental professionals capable of addressing and solving local, regional, national and international environmental and equity problems.



- d. Provide special focus on key species and on the issues of natural areas near growing metropolitan areas.

10. **Environmental Education.** The Green Centerpiece will offer educational opportunities to people of all ages. Education and training programs will be carried out by a collaboration between the City of Lewisville, the University of North Texas, and the Lewisville Independent School District. These programs will give people opportunities to:


- a. Interact with native Texas ecosystems and reconnect with the natural heritage of Lewisville and North Texas.
- b. Experience a flexible, safe, nurturing and inclusive environment.
- c. Learn about this ecosystem in a way that is appropriate to each learner's interests and skills, whether that learner is a child, local resident, ecotourist or other visitor.
- d. Improve physical, mental and emotional health through recreation experiences in an urban wilderness.
- e. Understand and value natural systems so they will choose to preserve and improve them.
- f. Feel empowered to address global environmental issues as a result of local action that positively impacts the local environment.
- g. Visit facilities and use a range of tools and techniques to experience and learn about the natural world, from "hands-on" projects to technology that enables global collaboration.
- h. Contribute to "citizen science" initiatives that expand learning about local and global ecosystems. Interact with native Texas ecosystems and reconnect with the natural heritage of Lewisville and North Texas.



11. **Enhanced Quality of Life.** Lewisville's identity as a community will be shaped by the Green Centerpiece:

- a. The Green Centerpiece will contribute to Lewisville's reputation as a community with a high quality of life that remains desirable over time.
- b. Lewisville's branding will incorporate this natural focus.
- c. Communications and marketing initiatives will use the Green Centerpiece, its activities and facilities as a central focal point for bringing new residents, businesses, researchers and visitors to Lewisville.



12. **Land Use and Infrastructure Investment.** Public and private investments in and around the Green Centerpiece will enjoy distinctive assets that set them apart from investments in other parts of Lewisville and the North Texas region:
- a. Land uses and development patterns will be compatible with the area’s ecosystems and will use the area’s assets as the basis for distinctive and lasting character.
  - b. Development in the Green Centerpiece will demonstrate the best current practices for water conservation, ‘grey water’ reuse, stream and pond water management and groundwater recharge.
  - c. Design standards will be established for private uses in and around the Green Centerpiece. They will incorporate current green building and landscaping practices, benefit from natural amenities, reduce impacts on environmental resources, and provide linkages between development and natural areas.
  - d. Public infrastructure (such as roads, trails, water and sewer systems) will be designed, constructed and operated according to current best practices for green infrastructure.
  - e. The design of the SH 121 transportation improvements in the Green Centerpiece will demonstrate Lewisville’s use of green design and inform people using this thoroughfare that they are in a special area with unique natural features.
  - f. Public art at key Green Centerpiece locations and facilities will reflect Lewisville’s natural setting, history and aspirations for the future.
  - g. Greenbelts or restorative corridors will be incorporated where possible on or adjacent to LISD’s campuses and facilities.
- 
13. **Economic Development.** In and around the Green Centerpiece, Lewisville residents and businesses will find opportunities for long-lasting jobs and business growth that also support the City’s fiscal sustainability:
- a. Development in and around the Green Centerpiece will play an important role in defining Lewisville’s identity. A Northern Gateway Identity Focal Point and other features along IH-35 will communicate to travelers that they are entering a community with a focus on its natural setting and leadership in sustainability.
  - b. Lake Park will be an important Green Centerpiece destination for visitors and Lewisville residents. It will offer water recreation and other activities that benefit from a Green Centerpiece location but require more extensive change to the natural ecosystem than is appropriate in environmental management and restoration areas.



- c. The Green Centerpiece and its surroundings will provide business locations for companies that value a green, natural setting and design. Economic development policies and incentives will support green businesses and sustainable design.
- d. Future use and closure plans for the landfill sites in the area will create environmentally-desirable sites for recreation and compatible business activities.

14. **Recreation and Education.** The environmental education offered in the Green Centerpiece will be joined by additional recreational options and connected to the rest of Lewisville in many ways:

- a. Trails in the Green Centerpiece will connect throughout the Lewisville community and to the rest of the North Texas region. Trails will be designed to be appropriate to their context and to exemplify Lewisville’s leadership in green design. Appropriate trails will be included for people walking, biking, canoeing or kayaking. Trails will enable residents and visitors to enjoy quiet experiences with nature, exercise and fitness, as well as the experience of the natural world during daily travel from place to place.
- b. The environmental experiences and education found in the Green Centerpiece will extend to the entire Lewisville parks system and its facilities throughout the community.
- c. The environmental educational collaboration between UNT and LISD will extend to the entire LISD system and will offer scholarships, research projects, certifications, college-level courses and other programs that help LISD students pursue careers related to the environment.
- d. Recreational experiences will respect the natural ecosystem and provide additional activity choices (such as dining, lodging, camping, hiking, and boating) for people visiting the Green Centerpiece from other parts of the U.S. and the world.
- e. East Hill Park, Spillway Park, LLELA and other properties will be developed in a manner that enhances the natural landscape and resources of the Green Centerpiece while providing meaningful and engaging outdoor recreation experiences for visitors.



## Updated Action Items

The charts below describe the Action Items identified to implement this Master Strategy. These charts provide the initial guidance for all partners involved in implementation. They contain the following pieces of information.

## Information on Action Items

### Action Item Number and Name

Each Action Item describes a specific step to be taken to achieve the goals of this Master Strategy. Each item is numbered, and has a short name for quick reference.

### Action Item Description

The Action Item name is followed by a description that explains more fully what the action plan involves.

### Desired Outcome

This is the result that is expected if the Action Item is completed successfully. It should be specific enough that someone can determine whether or not it was actually achieved.

### Lead Entity

The entity that will lead completion of this Action Item – the U.S. Army Corps of Engineers (USACE), City of Lewisville (City), University of North Texas (UNT), Lewisville Independent School District (LISD), property owners or others. In some cases, two or more partners share leadership responsibility.

### Timing

Some of these action items should be implemented immediately, while others may take additional time.

1. Highest priority – should begin in the adoption year – 2022 (Fiscal Year 2021-2022).
2. Short-Term is years 1 to 3 (FY 2022-2023 through FY 2024-2025).
3. Mid-Term is in years 4 to 9 (FY 2025-2026 through FY 2030-2031).
4. On-going is an activity that must become a continuing part of Operating Partner practices & operations

### Collaborating Entities

These are the other partners and organizations that will work with the lead entity to carry out an Action Item.

### Cost to Operating Partners

The cost is presented symbolically to indicate the level of new commitment involved.

- \$ reflects an action by one or more Operating Partners that will be carried out using existing program and budget resources.
- \$\$ reflects an action by one or more Operating Partners that is a new program or project, and that will likely require new budget resources.
- \$\$\$ reflects a major new investment by one or more Operating Partners that will likely involve new capital funding.

### Budget & Funding Sources

Potential cost estimates and funding sources are noted if they can be identified.

### Geographic Focus

If the Action Item involves specific geographic areas within the Green Centerpiece or the North Texas region, these areas are indicated.

### Virtual Focus

Any virtual components of the Action Item are explained here.

### JEDI Component

These include specific actions/tasks that partners will take to promote access, participation and connection to the Green Centerpiece through a justice, equity, diversity and inclusion lens.

### Other Comments

These include any general comments or notes that are important for the person or organization carrying out the strategy to know.

## Green Centerpiece Master Strategy Action Items

### Action Item Listing

#	Action Item Title	Lead Partner
1	USACE Lease for LLELA Renewal	Combined
2	Coordinated Volunteer Management	Combined
3	Coordinated Green Centerpiece Programming	Combined
4	Ongoing Collaborations and Partnerships	Combined
5	Lewisville Lake and LLELA Operations	USACE
6	White-tailed Deer Management	USACE
7	Fisheries Management Project	USACE
8	Prescribed Burn Management	USACE
9	Surveillance	USACE
10	Green Centerpiece Marketing Plan	COL
11	Green Centerpiece Activities and Events	COL
12	Environmentally-Inspired Public Art	COL
13	Residential Native Planting Certification Program	COL
14	Participant Evaluations	COL
15	Healthy Infrastructure Plan	COL
16	COL Sustainability Plan - Green Centerpiece Master Strategy Component	COL
17	Lake Park Master Plan	COL
18	LLELA Interpretive Plan Implementation	COL
19	Facilities Maintenance Program	COL
20	Green Centerpiece and Extending the Green Maintenance Program	COL
21	Capital Investment in Public Infrastructure within the Green Centerpiece	COL
22	Land Acquisition and Development in the Green Centerpiece and Extended Areas	COL
23	Landfill Redevelopment	COL
24	6 - 12 Connections to Real-World Research	LISD

#	Action Item Title	Lead Partner
25	K – 5 Natural Science Mentorship Program	LISD
26	Student Research Activities Support	UNT
27	Native Plant Nursery	UNT
28	Coursework for LLELA Activities	UNT
29	Restoration Plan Implementation	UNT
30	Plant-a-thon	UNT
31	FOLLELA Agreement	FOLLELA
32	Texas Master Naturalists' Agreement	FOLLELA
33	Outreach and Inclusion Program Support	FOLLELA



## Action Items with Combined Leadership

<i>1. USACE Lease for LLELA Renewal</i>	
<b>Action Item Description</b>	Renew USACE Lease of LLELA with three major partners (COL, LISD, UNT)
<b>Lead Entity</b>	City of Lewisville, UNT, LISD
<b>Desired Outcome</b>	Current lease expires in August 2022; request for renewal to be submitted by partners in June 2022.
<b>Timing</b>	1 – Highest Priority
<b>Collaborating Entities</b>	USACE, FOLLELA
<b>Cost to Operating Partners</b>	\$
<b>Budget &amp; Funding Sources</b>	Partner operating funds
<b>Geographic Focus</b>	LLELA
<b>Virtual Focus</b>	N/A
<b>JEDI Component</b>	Maintain access to, restoration of and education about the natural resources provided through USACE lease
<b>Other Comments</b>	<p>Requirements for lease renewal include:</p> <p>Letter from Grantee requesting renewal/non-renewal of lease</p> <ul style="list-style-type: none"> <li>• Letter should include, at a minimum, the following information:</li> <li>• Lessee name, facility name (if different) point of contact, phone number and email address;</li> <li>• Purpose of the lease area;</li> <li>• Requested term length;</li> <li>• Physical address of the property where the leasehold is located;</li> <li>• Mailing address, if different from physical address;</li> <li>• Updated Five Year Development Plan, year-by-year (i.e., Year 1, Year 2, etc.), detailed, include basic drawings and estimated costs</li> <li>• Updated Site Plan detailing current services and amenities provided by the Lessee</li> <li>• Updated Sign Plan, if any changes were made to any of the signs from the last lease agreement</li> <li>• Current proof of Insurance (if Real Property (RP) is in leasehold, ensure RP is covered in the policy)</li> </ul>

*1. USACE Lease for LLELA Renewal*

- Current Water/Sanitary and Electric certifications, if applicable
- Current list of rates and prices, if applicable
- Statement of ADA Compliance
- A list of any and all Sub-Lessees and current copy of the sublease
- ENG 3143 Joint Inspection form if applicable (only if leasehold has Government owned Real Property)
- Survey and legal description (if leasehold acreage has changed), which must meet the following criteria:
- The legal description should depict leasehold acreage and should tie into a known U.S. Government monument. Submittals shall conform to the following:
- Drawings are to be in DGN (Microstation) or SHP (ArcGIS) file format (preferably both) and georectified in Texas State Plane 4202 North Central, UTM Zone 15 North.
- Legal descriptions are to be furnished in DOCX (WORD).
- PDF (and/or copies) of the survey drawings and legal description must be signed and stamped (finalized version) by the surveyor.

This list may not be complete and Lessee may be required to provide other documentation as requested for renewal.

<i>2. Coordinated Volunteer Management</i>	
<b>Action Item Description</b>	Establish coordinated procedures related to volunteers contributing to the Green Centerpiece and related programs. These procedures should address volunteer application, background check, training, scheduling, time-keeping and certification. Establish a system that allows for volunteer background checks to be approved and accepted between operating partners and other identified organizations.
<b>Lead Entity</b>	City of Lewisville, LISD, UNT, Friends of LLELA
<b>Topic</b>	Administrative
<b>Desired Outcome</b>	A coordinated and streamlined process that benefits everyone. Volunteers are screened and trained appropriately; their time is used effectively; and they receive recognition of their efforts through certification or other means. The partner organizations gain additional capacity and expertise to carry out programs in the Green Centerpiece and beyond.
<b>Timing</b>	1 -Highest Priority
<b>Collaborating Entities</b>	All Partners
<b>Cost to Partners</b>	\$, \$\$
<b>Budget &amp; Funding Sources</b>	City of Lewisville, LISD, UNT, Grants
<b>Geographic Focus</b>	Green Centerpiece, Lewisville Park System and LISD sites
<b>Virtual Focus</b>	Communicating volunteer opportunities and training online
<b>JEDI Component</b>	Establish a procedure that allows for people of all populations to easily participate in volunteer activities.
<b>Other Comments</b>	Volunteers join the Green Centerpiece team for various reasons, but these often include 1) a sense of community and belonging, 2) learning from professionals in natural sciences and 3) a deep connection with LLELA and the natural world. They have ownership in Green Centerpiece mission and contribute to a unique, vibrant, and lasting community which supports the vision and mission. Coordinated management will make it easier for people to volunteer with different organizations within the Green Centerpiece, for example, UNT Faculty and students who are background checked through UNT, or master naturalists who are background checked through Texas AgriLife, could pursue volunteering at LLELA, LISDOLA, with students in LISD and throughout the community. Partners need to determine what common elements need to be part of the volunteer vetting process. Partners explore

*2. Coordinated Volunteer Management*

	training offerings or certifications for volunteers that would build skills needed in the field.
--	--



<i>3. Coordinated Green Centerpiece Programming</i>	
<b>Action Item Description</b>	Collaborate to create hands-on/interactive programs that communicate a common environmental message, engage participants through experiential learning, applied research opportunities, outreach, outdoor education, recreation, and connection with nature.
<b>Lead Entity</b>	City of Lewisville, LISD, UNT, FOLLELA
<b>Desired Outcome</b>	Design new and reimagine existing programs that utilize environmental education and outdoor recreation to connect participants with nature and increase their involvement in conservation and restoration. These programs may include programs at LLELA, internships for LISD students, citizen science, outreach programs/activities throughout the community, offering transportation to locations, virtual sessions, etc. Programs will meet guidelines and principles established in the LLELA Interpretive Plan, PARD Recreation Program, LISDOLA program blueprints and UNT AERI Plans and Goals. Generate certification programs for students (high school, college) and citizen volunteers
<b>Timing</b>	4 - Ongoing
<b>Collaborating Entities</b>	KLB, Master Naturalists
<b>Cost to Operating Partners</b>	\$, \$\$
<b>Budget &amp; Funding Sources</b>	Grants, Current budget resources and staffing, SPECA
<b>Geographic Focus</b>	All areas
<b>Virtual Focus</b>	Online marketing of programs, virtual sessions, interactive websites for data collection and use for instruction within LISD and UNT.
<b>JEDI Component</b>	Provide an opportunity for users to meaningfully recreate outdoors in a safe and structured space. Provide educational opportunities to underserved populations within the community. Meet residents where they are at by establishing a mobile outdoor recreation program. Scholarship funds will be considered for underserved residents and visitors. Consider that program materials be produced in multiple languages.
<b>Other Comments</b>	LISD may incorporate this approach when designing curricular experiences. UNT faculty may serve as speakers for LISD secondary courses or for community programs. UNT students may participate in plan and program development within the Green Centerpiece and

### *3. Coordinated Green Centerpiece Programming*

throughout Lewisville. UNT-AERI Faculty may provide opportunities for facilitated citizen-science interactions, and participation in other research activities, with LISD Faculty, Staff, and students, as well as community members. LISD students and community members may pursue educational objectives through UNT training or internships. FOLLELA members could similarly support educational and research activities. Future funding will be necessary for vehicles that can provide transportation for participants and additional educational/recreational staff. Pilot programs can partner with PLOW and utilize relationships built with apartment properties. Additional outdoor recreation/education program staff will be necessary to expand outreach efforts

<i>4. Ongoing Collaborations and Partnerships</i>	
<b>Action Item Description</b>	Foster ongoing collaborations between LLELA entities and create additional partnerships to support Green Centerpiece initiatives.
<b>Lead Entity</b>	City of Lewisville, LISD, UNT
<b>Desired Outcome</b>	Establish and direct collaborative activities within LLELA involving visitor usage to assure maintenance of a native wilderness environment.  Find community partners that support the mission of the Green Centerpiece and can help with funding projects, providing efficient services, communications, labor, etc.
<b>Timing</b>	2 - Short term (1 to 3 years)
<b>Collaborating Entities</b>	All other partners, community and non-profit organizations
<b>Cost to Partners</b>	\$\$
<b>Budget &amp; Funding Sources</b>	COL, Grants, Private
<b>Geographic Focus</b>	All areas
<b>Virtual Focus</b>	Provide partnership information online
<b>JEDI Component</b>	Utilize community partnerships to remove disadvantages and barriers for users
<b>Other Comments</b>	Partners can include corporations, vendors, community groups, institutions, etc. PARD is working with KLB and the Elm Fork Texas Master Naturalists to work within LLELA but also other areas of the park system targeted for transition into native plantings, prairieland, etc. Identify vendors/partners to offer kayak tours, rentals, etc.

## U.S. Army Corps of Engineers (USACE) Action Items

<i>5. Lewisville Lake and LLELA Operations</i>	
<b>Action Item Description</b>	Continue operations at Lewisville Lake that provide adequate water storage, flood protection, natural habitat and recreational opportunities. Continue operations at LLELA that benefit fish and wildlife and retain the habitat on which these species depend.
<b>Desired Outcome</b>	Active property management to improve and preserve habitat quality and quantity according to LLELA's Comprehensive Management Plan. This involves daily activities such as: conducting prescribed burns, growing and planting native species of extirpated plants, controlling the spread of exotic species with the strategic use of herbicides and other methods, and the reintroduction of extirpated native fauna. Determine the impact of future infrastructural changes on wildlife habitat quality and native biodiversity, such as additional trails, buildings, parking, etc. Results should include: <ul style="list-style-type: none"> <li>• Improved wildlife habitat, increased native biodiversity, sustainable native wildlife populations</li> <li>• Provision of a source of native biodiversity for future habitat restorations within the north Texas region</li> <li>• Prevention of fragmentation and degradation of wildlife habitat through best practices management policies.</li> </ul>
<b>Lead Entity</b>	USACE
<b>Timing</b>	4 - Ongoing
<b>Collaborative Entities</b>	Native Plant Society of Texas, Native Prairies Association of Texas
<b>Cost to Operating Partners</b>	\$\$\$
<b>Budget &amp; Funding Sources</b>	
<b>Geographic Focus</b>	Area owned by USACE (Lewisville Lake and LLELA)
<b>Virtual Focus</b>	N/A
<b>Other Comments</b>	This Action Item recognizes the existing and on-going USACE operations.



<i>6. White-tailed Deer Management</i>	
<b>Action Item Description</b>	USACE will conduct whitetail deer population surveys and conduct associated special hunts to manage the whitetail deer herd within the LLELA area. USACE will follow standard TPWD protocol and best management procedures utilizing cameras, spotlight counts, incidental sighting counts, and special managed hunts.
<b>Desired Outcome</b>	A sustainable whitetail deer population with the desired buck to doe ratio and healthy numbers throughout the various age classes.
<b>Lead Entity</b>	USACE - Lewisville Lake Office Staff
<b>Timing</b>	4 - ongoing
<b>Collaborating Entities</b>	USACE partners with TPWD wildlife biologists and Game Wardens for input on management goals and objectives as well as coordination of special hunts.
<b>Cost to Operating Partners</b>	
<b>Budget &amp; Funding Sources</b>	USACE funding
<b>Geographic Focus</b>	Camera surveys are conducted over the entire property while special managed hunts occur east of the river channel.
<b>Virtual Focus</b>	N/A
<b>JEDI Component</b>	Ongoing activity that began in 2012 that has provided a unique outdoor recreational opportunity to handicapped youth.
<b>Other Comments</b>	USACE partners with the National Wild Turkey Federation to host an annual event. Fall camera surveys and fall/winter hunts (September - December). Year-round incidental sighting and camera monitoring.

<i>7. Fisheries Management Project</i>	
<b>Action Item Description</b>	USACE will cooperate with the Texas Parks and Wildlife Department in order to periodically stock hatchery raised rainbow trout in the outflow on the downstream side of the dam when the appropriate environmental conditions have been met for their safe release.
<b>Desired Outcome</b>	Creating a desirable cold-water fishery in order to take pressure off of the native species that receive heavy pressure during the warm recreation season.
<b>Lead Entity</b>	USACE - Lewisville Lake Office Staff
<b>Timing</b>	4 - Ongoing
<b>Collaborating Entities</b>	USACE partners with TPWD wildlife biologists and Game Wardens for input on management goals and objectives.
<b>Cost to Operating Partners</b>	
<b>Budget &amp; Funding Sources</b>	The Texas Parks and Wildlife Department provides the funding and resources for this project.
<b>Geographic Focus</b>	Stocking occurs in the river channel downstream of the dam in LLELA.
<b>Virtual Focus</b>	N/A
<b>JEDI Component</b>	
<b>Other Comments</b>	This is an ongoing activity that we have been active for many years which provides outdoor recreation opportunities to the public. USACE partners with the Texas Parks and Wildlife Department to perform this annual event.

<i>8. Prescribed Burn Management</i>	
<b>Action Item Description</b>	USACE will review and approve the burn plans that are submitted by the University of North Texas to ensure proper management as well as safe and effective controlled burns.
<b>Desired Outcome</b>	Maintaining and improving the native prairie ecosystem present on about one third of the property through a responsible fire management program.
<b>Lead Entity</b>	USACE - Lewisville Lake Office Staff
<b>Timing</b>	4 -Ongoing
<b>Collaborating Entities</b>	USACE works with the University of North Texas as well as the City of Lewisville in order to safely perform these burns.
<b>Cost to Operating Partners</b>	
<b>Budget &amp; Funding Sources</b>	Funding is provided by the University of North Texas.
<b>Geographic Focus</b>	Green Centerpiece. Typically in the eastern one third of LLELA.
<b>Virtual Focus</b>	N/A
<b>JEDI Component</b>	
<b>Other Comments</b>	This is an ongoing activity that we have actively participated in for many years. Fall through Spring.

<i>9. Surveillance</i>	
<b>Action Item Description</b>	USACE will cooperate with the City of Lewisville in order to actively monitor and surveil the area.
<b>Desired Outcome</b>	To ensure that the area is only being accessed from designated locations and by individuals who are permitted to enter as well as to ensure that visitors remain safe while on the property.
<b>Lead Entity</b>	USACE - Lewisville Lake Office Staff
<b>Timing</b>	4 – Ongoing
<b>Collaborating Entities</b>	USACE works with the City of Lewisville to monitor LLELA.
<b>Cost to Operating Partners</b>	
<b>Budget &amp; Funding Sources</b>	USACE funding and City of Lewisville funding.
<b>Geographic Focus</b>	The entire property is monitored.
<b>Virtual Focus</b>	N/A
<b>JEDI Component</b>	
<b>Other Comments</b>	This is an ongoing activity that we have been active in for many years which provide security to the public.



## City of Lewisville (COL) Action Items

<i>10. Green Centerpiece Marketing Plan</i>	
<b>Action Item Description</b>	Market the Green Centerpiece to a wide market through various media channels with a focus on regional and local residents
<b>Lead Entity</b>	City of Lewisville
<b>Desired Outcome</b>	Promote the Green Centerpiece as a location in which to connect with nature, recreate outdoors, gather with family and friends, join in citizen science efforts, give back to the community through volunteering, and participate in guided programs.
<b>Timing</b>	2 - Short term (1-3 years)
<b>Collaborating Entities</b>	All other partners
<b>Cost to Partners</b>	\$
<b>Budget &amp; Funding Sources</b>	COL
<b>Geographic Focus</b>	All areas
<b>Virtual Focus</b>	Online components of marketing plan
<b>JEDI Component</b>	Communicate access to opportunities for participants of all backgrounds and abilities. Use multi-lingual materials, media outlets and various communication methods for persons with impairments.
<b>Other Comments</b>	A comprehensive marketing plan is essential to maximize the benefit of the Green Centerpiece and to gain the greatest exposure for the Nature Center. The target audiences and their locations should be explored. Traditional (e.g., print) and non-traditional (e.g., digital/virtual) venues to share information should be explored. A re-designed public website for LLELA is currently being developed, with expected launch in 2022. Facebook already is used to great effect, while other social media outlets will be researched after the website launch. Maintaining a presence at special events and coordinating outreach opportunities will also be necessary for awareness. Plan can be developed by PARD, CRT with assistance from UNT (perhaps as a marketing class project), FOLLELA

<i>11. Green Centerpiece Activities and Events</i>	
<b>Action Item Description</b>	Create a year-round calendar of activities that draw visitors to the Green Centerpiece
<b>Lead Entity</b>	City of Lewisville
<b>Desired Outcome</b>	Events will focus on developing events, programs, and activities that promote eco-friendly tourism and opportunities. Current events will continue and additional events added. For future budget years, the staff and resources needs should be determined by the Green Centerpiece marketing plan. Events should connect people with nature without damaging the diverse wildlife habitat.
<b>Timing</b>	2- Short Term (1-3 years)
<b>Collaborating Entities</b>	All other partners
<b>Cost to Operating Partners</b>	\$
<b>Budget &amp; Funding Sources</b>	COL
<b>Geographic Focus</b>	All areas
<b>Virtual Focus</b>	Online marketing of events & activities
<b>JEDI Component</b>	Provide accessible nature and outdoor recreation experiences for all audiences by producing marketing and informational materials in multiple languages and via accessible media; coordinate events and programs that resonate and connect with residents/visitors from diverse backgrounds; provide a spectrum of activities at various price points.
<b>Other Comments</b>	Current events include Christmas at the Cabin, Mariposas, BioBlitz, Run LLELA etc.; Kayak and Canoe based events can be considered with the completion of the kayak launch at FM3040 and the Elm Fork.

<i>12. Environmentally-Inspired Public Art</i>	
<b>Action Item Description</b>	Public art in the Green Centerpiece, gateways and key locations throughout Lewisville to place focus on the Green Centerpiece
<b>Lead Entity</b>	City of Lewisville
<b>Desired Outcome</b>	Use public art in the Green Centerpiece, at gateways and other key locations throughout Lewisville to communicate the community's focus on the Green Centerpiece. Incorporate action item into the City of Lewisville Public Art Plan.
<b>Timing</b>	2 – Short term (1 to 3 years)
<b>Collaborating Entities</b>	UNT, LISD, FOLLELA
<b>Cost to Operating Partners</b>	\$\$
<b>Budget &amp; Funding Sources</b>	Grants, Arts Funding
<b>Geographic Focus</b>	Green Centerpiece
<b>Virtual Focus</b>	Online calls for submissions; potential for virtual media pieces
<b>JEDI Component</b>	Reflect the variety of people and cultures in our community by giving a voice to artists; publicly displayed art connects residents without resources to visit museums and galleries to the art world.
<b>Other Comments</b>	Consider community collective piece for FY23

<i>13. Residential Native Planting Certification Program</i>	
<b>Action Item Description</b>	Develop a program that includes classes that teach plant identification and best practices for native plant residential landscaping.
<b>Lead Entity</b>	City of Lewisville
<b>Desired Outcome</b>	Educate residents on the differences between native and invasive species, best practices for landscaping, and other region-specific information that will benefit the local eco-region. Participants will gain a sense of connection to the local environment and increase the presence of desirable plant species in Lewisville. Establish a certification and inspection program so residents may modify their yards to include native plants and meet all city codes.
<b>Timing</b>	2 – Short term (1 to 3 years)
<b>Collaborating Entities</b>	UNT, FOLLELA
<b>Cost to Partners</b>	\$\$
<b>Budget &amp; Funding Sources</b>	Grants, COL
<b>Geographic Focus</b>	City of Lewisville
<b>Virtual Focus</b>	Online marketing of program, may include virtual workshops and certification processes
<b>JEDI Component</b>	Provide a tool to enable people to experience native plants in their own communities/homes. Identify funding resources for residents to access to support modification of their landscaping.
<b>Other Comments</b>	Incorporate signage in public spaces that feature pollinators and native landscaping that directs residents to learn more about areas and how they can incorporate similar plants into their own yards. Engage partners in the community to assist with development, administration and instruction associated with the program. Potential partners include KLB, EFTMN and NPSOT

<i>14. Participant Evaluations</i>	
<b>Action Item Description</b>	Develop procedure for collecting participant feedback and outcomes to determine effectiveness and satisfaction with visits to LLELA and the Green Centerpiece, as well as engagement in programs and activities.
<b>Lead Entity</b>	City of Lewisville
<b>Desired Outcome</b>	Conduct participant satisfaction surveys for all programs. Where possible, assess impacts of LLELA programs on participants' understanding of concepts and long-term retention of information. Staff can confirm that educational and recreational programs are meeting teacher and customer expectations while accomplishing LLELA's educational goals. User surveys can be used to collect feedback from visitors and volunteers. Information collected will be used to determine realignment of programming resources, development/modification of programs.
<b>Timing</b>	1 – Highest priority
<b>Collaborating Entities</b>	LISD, UNT
<b>Cost to Partners</b>	\$
<b>Budget &amp; Funding Sources</b>	Grants, COL
<b>Geographic Focus</b>	Green Centerpiece
<b>Virtual Focus</b>	Online surveying and channels for feedback
<b>JEDI Component</b>	Give all users a voice to shape planning/programming within the Green Centerpiece
<b>Other Comments</b>	LLELA can potentially partner with Irving ISD, or LISD whose fifth graders and 7th graders that have attended programs from 2010 until 2021. Their testing data over those years might give insight into impact of the LLELA visit on student retention of related information. Carrie Allen in UNT's research and development department may assist with creation of evaluations.



<i>15. Healthy Infrastructure Plan</i>	
<b>Action Item Description</b>	Create and execute the Healthy Infrastructure Plan to provide opportunities for enhancing Lewisville’s open spaces, trails, and the urban tree canopy.
<b>Lead Entity</b>	City of Lewisville
<b>Desired Outcome</b>	The City with the assistance of UNT and LISD will develop a Healthy Infrastructure Master Plan that establishes goals and action steps for creating a thriving community where every resident has access to a quality park or open space, enjoys the benefits of robust urban tree canopy, and increases walkable/bikeable access to the places Lewisville lives, learns, works and plays.
<b>Timing</b>	2- Short term (1 – 3 years)
<b>Collaborating Entities</b>	UNT, LISD
<b>Cost to Partners</b>	\$\$
<b>Budget &amp; Funding Sources</b>	Grants, COL
<b>Geographic Focus</b>	City of Lewisville
<b>Virtual Focus</b>	Online surveys; plan will be posted on playlewisville.com
<b>JEDI Component</b>	Remove barriers to provide equal access and utilize user feedback to shape future planning and address any existing gaps in access to nature and play.
<b>Other Comments</b>	Identify and prioritize connections to and within the Green Centerpiece that accommodate multi-modal transportation alternatives and expand technology applications. Natural trails within LLELA and the Green Centerpiece will be classified according to the US Forest Service Trail Class Matrix. Consider pedestrian and bicycle access to LLELA from south and west points of property (access can be monitored).

<i>16. COL Sustainability Plan – Green Centerpiece Master Strategy Component</i>	
<b>Action Item Description</b>	Establish guidelines for how the Green Centerpiece plans to achieve goals that create financial, societal, and environmental sustainability.
<b>Lead Entity</b>	City of Lewisville
<b>Desired Outcome</b>	Put in place regulation and ordinances that support environmental quality and protection of the natural assets located in the Green Centerpiece and beyond (e.g., Native landscaping, noise/light pollution, etc.). Limited resources (such as land, water, energy, clean air, natural assets, and public funds) are used efficiently to provide a thriving natural ecosystem, desirable quality of life, and business climate that today’s users and businesses need and want, without reducing Lewisville’s ability to provide that same natural ecosystem, quality of life and business climate so future generations of residents and businesses can succeed here too.
<b>Timing</b>	2- Short term (1 – 3 years)
<b>Collaborating Entities</b>	UNT, FOLLELA, COL Departments
<b>Cost to Operating Partners</b>	\$
<b>Budget &amp; Funding Sources</b>	COL
<b>Geographic Focus</b>	All areas
<b>Virtual Focus</b>	Sustainability Plan and Green Centerpiece Master Strategies online
<b>JEDI Component</b>	Ensure equal access to natural resources for future generations; extend natural resources found in the Green Centerpiece are extended into other public spaces within Lewisville via programs and infrastructure.
<b>Other Comments</b>	Combined previous action item to include sustainable principles in City’s development code (Green Code). Sustainable design does not significantly increase project capital costs if incorporated from the beginning of the design process, and it can reduce operating and maintenance costs over the life of the facility.

<i>17. Lake Park Master Plan</i>	
<b>Action Item Description</b>	Develop and implement Lake Park Master Plan
<b>Lead Entity</b>	City of Lewisville
<b>Desired Outcome</b>	Update Lake Park to be representative of the Green Centerpiece and to provide enhanced recreational amenities. Lake Park should function not only as a gathering location for the community but drive tourism by bringing in quality events and sports activities. Make improvements to day use area and campground, as well as investments in the marina and fishing barge to meet USACE Outgrant requirements.
<b>Timing</b>	2- Short term (1 – 3 years)
<b>Collaborating Entities</b>	USACE, Private Developer
<b>Cost to Operating Partners</b>	\$\$\$, \$\$
<b>Budget &amp; Funding Sources</b>	COL, Grants, Private Funding
<b>Geographic Focus</b>	Lake Park
<b>Virtual Focus</b>	N/A
<b>JEDI Component</b>	Ensure all upgrades and addition are designed with accessibility in mind. Integrate a combination of fee and free based areas in improvements to the park (ex. neighborhood park component)
<b>Other Comments</b>	COL is currently working to identify private developers to assist with Marina and Fishing Barge redevelopment.

<i>18. LLELA Interpretive Plan Implementation</i>	
<b>Action Item Description</b>	Address the opportunities, concerns, and issues described in the LLELA Interpretive Plan
<b>Lead Entity</b>	City of Lewisville
<b>Desired Outcome</b>	Help visitors understand that LLELA is more than a place to enjoy outdoor recreation and is home to significant restoration and preservation efforts. Use a combination of programs and infrastructure to introduce residents/visitors to nature – including how to sustainably immerse themselves within it and protect it (when they are LLELA and when they are beyond the fence line).
<b>Timing</b>	4- On-going
<b>Collaborating Entities</b>	All other partners
<b>Cost to Operating Partners</b>	\$, \$\$, \$\$\$
<b>Budget &amp; Funding Sources</b>	COL, Grants
<b>Geographic Focus</b>	LLELA
<b>Virtual Focus</b>	Website revision; virtual hikes and programming
<b>JEDI Component</b>	Enhance and create opportunities for all people to experience nature and learn about the environment and the impact of human activities. Resources will be designed with considerations for accessibility and inclusion including signage and print material in multiple languages.
<b>Other Comments</b>	Cooperating partners and their staff, volunteers and contractors will refer to the interpretive plan, use it and adapt it as conditions evolve and projects are funded and get underway. The plan provides guidelines for the writers, interpreters, landscape architects, exhibit developers, graphic designers, interactive designers, and exhibit fabricators who are responsible for its implementation.

<i>19. Facilities Maintenance Program</i>	
<b>Action Item Description</b>	Develop a plan and program for maintaining facilities within the Green Centerpiece including the cabin and ancillary buildings
<b>Lead Entity</b>	City of Lewisville
<b>Topic</b>	Infrastructure
<b>Desired Outcome</b>	A facilities maintenance plan will detail the strategy for proactively maintaining facilities within the Green Centerpiece. An effective maintenance will reflect the vision and mission of the Green Centerpiece, include an accurate assessment of existing facilities, incorporate the perspectives of the operating partners, and focus on preventive measures that ensure that capital investment is managed responsibly.
<b>Timing</b>	2- Short term (1 – 3 years)
<b>Collaborating Entities</b>	UNT, FOLLELA
<b>Cost to Partners</b>	\$, \$\$\$
<b>Budget &amp; Funding Sources</b>	City of Lewisville, Grants
<b>Geographic Focus</b>	Green Centerpiece
<b>Virtual Focus</b>	N/A
<b>JEDI Component</b>	Ensure ADA access to all displays
<b>Other Comments</b>	Coordinate with COL Facilities Department to develop and implement plan. The cabin was the most mentioned and highest rate elements at LLELA in the most recent City of Lewisville Citizens Survey. Standard Operating Procedures need to be developed.



<i>20. Green Centerpiece and Extending the Green Maintenance Program</i>	
<b>Action Item Description</b>	Establish a maintenance program for maintaining outdoor recreation areas, urban forests, greenbelts and trail systems in LLELA, Greenbelts and natural areas throughout the parks system.
<b>Lead Entity</b>	City of Lewisville
<b>Desired Outcome</b>	Within LLELA, the team will focus on well-maintained high traffic and activity-heavy areas west of the river. Maintenance includes routine mowing of roadsides, cleaning up trail heads, and keeping camping areas presentable. Trash cans need regular service to keep animals from scattering litter. The team will be responsible for repair of picnic tables, benches, signs/kiosks, gates, etc. In addition, the crew will support UNT efforts as prescribed by the Restoration Plan. Beyond LLELA, the team will maintain greenbelts and trails in accordance with PARD maintenance standards and greenbelt plans.
<b>Timing</b>	4 - On-going
<b>Collaborating Entities</b>	UNT, FOLLELA
<b>Cost to Operating Partners</b>	\$\$
<b>Budget &amp; Funding Sources</b>	COL
<b>Geographic Focus</b>	Green Centerpiece, Extended Area
<b>Virtual Focus</b>	n/a
<b>JEDI Component</b>	Maintaining access to natural resources with a staff that reflects the community and the natural eco-systems of the region.
<b>Other Comments</b>	A larger maintenance team is required to keep up with higher levels of recreation users and to preserve aesthetically pleasing natural areas, as well as accommodating the additional responsibilities of maintaining the greenbelts. A clean Green Centerpiece and natural spaces throughout Lewisville will set the example for the way the environment is to be respected and cared for. It will deter littering and vandalism and help establish these areas as the place to go for connecting with nature and enjoying ecologically compatible recreation. Growing the current team will include adding positions such as operations supervisor, foreman, park technician, park maintenance worker to assist the crew leader and park technician currently in place.

<i>21. Capital Investment in Public Infrastructure within the Green Centerpiece</i>	
<b>Action Item Description</b>	Plan, fund, improve, design, and construct infrastructure to enhance connection to and sustainable use of the Green Centerpiece to include playspaces, trails, personal watercraft facilities, campgrounds, nature center, ancillary facilities, and organic infrastructure.
<b>Lead Entity</b>	City of Lewisville
<b>Desired Outcome</b>	<p>Families with children visit LLELA and the Green Centerpiece for outdoor nature fun and exercise, enjoying play spaces as a regular part of visitation. Participants in field experiences and other programs also benefit from access to natural recreational areas and playgrounds.</p> <p>Establish a network of trails to connect with Green Centerpiece from all areas of Lewisville and surrounding communities. “All Trails Lead to LLELA”. Establish planned Stewart Creek Trail within LLELA.</p> <p>Design and construct an improved and accessible kayak launch site at LLELA and along the Trinity River. Continue to enhance the Trinity River Paddling Trail (a recreation trail recognized by the National Park System). Look at boat launch improvements at Lake Park.</p> <p>Design and construction of a Nature Center so that students, residents, and visitors can enjoy and learn about the natural systems in the Green Centerpiece. Partner approvals and funding must be secured to create a center that provides the educational and visitor programming envisioned by this plan.</p> <p>Consider improvements to campgrounds, ancillary facilities as needed.</p> <p>Investment in the tree canopy and native plants within the Green Centerpiece and throughout the community per the implementation plan established in the Healthy Infrastructure Plan, restoration plans and greenbelt plans.</p>
<b>Timing</b>	3 - Mid-term (4 – 9 years)
<b>Collaborating Entities</b>	LISD, UNT, FOLLELA
<b>Cost to Operating Partners</b>	\$\$\$
<b>Budget &amp; Funding Sources</b>	COL, Grants, Private

<i>21. Capital Investment in Public Infrastructure within the Green Centerpiece</i>	
<b>Geographic Focus</b>	LLELA, Trinity River
<b>Virtual Focus</b>	Website presence, online marketing, social media and virtual tours
<b>JEDI Component</b>	Provide opportunities for environmental learning and nature connections to all populations. Offer a variety of fee-based and free programs and natural areas. Provide a setting for people of all backgrounds to enjoy an experience in nature. Ensure accessible routes and use of play areas.
<b>Other Comments</b>	<p>Creating nature play areas is a growing movement, and there are many resources for designing and implementing these spaces. Recreation spaces should be located close to the Nature/Visitor Center or near large parking areas such as the group campground and pavilion.</p> <p>Need to establish date for charrette for the nature center in 2022 to prepare for COL 2024 4B Bond Program. Charrette will allow partners to explore needs for the facility, as well as possibilities for leveraging existing assets such as LISDOLA and enhancing connections/access. Continue to partner with Trinity River Coalition for kayak and canoe programs/opportunities. Trees must be seen as infrastructure.</p>

<i>22. Land Acquisition and Development in the Green Centerpiece and Extended Areas</i>	
<b>Action Item Description</b>	Purchase, design and develop property in and beyond the Green Centerpiece to preserve the area's ecosystems.
<b>Lead Entity</b>	City of Lewisville
<b>Desired Outcome</b>	Ensure as many parcels of land within Green Centerpiece and Lewisville are preserved for recreation, and land banking and conservation/preservation
<b>Timing</b>	3 - Mid-term (4 – 9 years)
<b>Collaborating Entities</b>	
<b>Cost to Partners</b>	\$\$\$
<b>Budget &amp; Funding Sources</b>	COL, Private, Grants
<b>Geographic Focus</b>	Central Area, Extended Area
<b>Virtual Focus</b>	N/A
<b>JEDI Component</b>	Preserve natural/recreation space to combat impact of climate change – specifically in underserved, under represented neighborhoods. Create access to more nature connections and activities for all people.
<b>Other Comments</b>	Note: East Hill Park, Spillway Park and other properties such as the Duwe properties, undeveloped portions of Railroad Park will be developed in a manner that enhances the natural landscape and resources of the Green Centerpiece while providing meaningful and engaging outdoor recreation experiences for visitors

<i>23. Landfill Redevelopment</i>	
<b>Action Item Description</b>	Identify desirable recreational use for closed landfills
<b>Lead Entity</b>	City of Lewisville
<b>Desired Outcome</b>	Work with landfill owners to develop closure plans that create an environmentally desirable site and aesthetically pleasing recreational use.
<b>Timing</b>	3 - Mid-term (4 – 9 years)
<b>Collaborating Entities</b>	KLB
<b>Cost to Partners</b>	\$\$\$
<b>Budget &amp; Funding Sources</b>	Private, Grants
<b>Geographic Focus</b>	Landfills within the Green Centerpiece
<b>Virtual Focus</b>	N/A
<b>JEDI Component</b>	Create recreational opportunities in a previously unusable green space will prevent urban blight and other nefarious activities that threaten the safety and well-being of nearby neighborhoods and businesses.
<b>Other Comments</b>	Discussions with Waste Management are underway to determine possibilities for incorporating nature-based redevelopment opportunities to the site once closed. Trail easements providing access around landfills through the Green Centerpiece and to the Trinity River have been secured at Lewisville, Camelot and WM landfills.



## Lewisville Independent School District (LISD) Action Items

<i>24. 6 – 12 Connections to Real-World Research</i>	
<b>Action Item Description</b>	Connect secondary students with environmental research being conducted at LLELA, UNT and within the City of Lewisville.
<b>Desired Outcome</b>	Engage young people with opportunities so they can see themselves as scientists, connect with university faculty and students, and consider a career in the sciences.
<b>Lead Entity</b>	LISD, UNT
<b>Timing</b>	4 - Ongoing
<b>Collaborating Entities</b>	City of Lewisville
<b>Cost to Partners</b>	\$
<b>Budget &amp; Funding Sources</b>	Current budget resources
<b>Geographic Focus</b>	LLELA
<b>Virtual Focus</b>	Virtual guest speakers, class discussions
<b>JEDI Component</b>	Provide access to scientific practices for all students through analysis of local data.
<b>Other Comments</b>	Begin volunteer program to engage secondary campus clubs with environmental activities onsite at LLELA/LISDOLA as a point of entry to learn more about research being conducted locally. Continue to connect LISD Technology Exploration and Career Centers with opportunities.

<i>25. K – 5 Natural Science Mentorship Program</i>	
<b>Action Item Description</b>	Supplement existing elementary afterschool programs to provide mentors for students in the natural sciences and ecological fields.
<b>Desired Outcome</b>	Produce ecological stewards for life through mentoring.
<b>Lead Entity</b>	LISD
<b>Timing</b>	4 - Ongoing
<b>Collaborating Entities</b>	Friends of LLELA
<b>Cost to Partners</b>	\$
<b>Budget &amp; Funding Sources</b>	Existing budget, volunteer engagement
<b>Geographic Focus</b>	LISD campuses within City of Lewisville and/or that represent underserved populations
<b>Virtual Focus</b>	Virtual “Ask a Naturalist” or similar opportunities
<b>JEDI Component</b>	Students of all populations have access to nature-oriented enrichment activities in a safe, structured environment built into existing afterschool programming
<b>Other Comments</b>	Existing programs could include, for example, Extended School Day.

## University of North Texas (UNT) Action Items

<i>26. Student Research Activities Support</i>	
<b>Action Item Description</b>	Support ongoing University of North Texas mentored undergraduate and graduate student research activities at LLELA.
<b>Desired Outcome</b>	Increase the number of students utilizing LLELA for research opportunities. <ul style="list-style-type: none"> <li>- Hands on research activities involved in conservation, biodiversity, and ecological restoration</li> <li>- Volunteer programs:</li> <li>- Ecology degree program</li> <li>- College of Education</li> <li>- Public Administration</li> <li>- Summer internships</li> </ul>
<b>Lead Entity</b>	Richard Freiheit and other UNT Faculty members in the Environmental Science and/or Biology Departments.
<b>Timing</b>	Ongoing and throughout the year
<b>Collaborating Entities</b>	LISD / City of Lewisville
<b>Cost to Partners</b>	\$
<b>Budget &amp; Funding Sources</b>	UNT / AERI and Faculty funding sources (federal, state, Foundation, private) Summer research - <a href="#">Research Experiences for Undergraduates</a>
<b>Geographic Focus</b>	LLELA
<b>Virtual Focus</b>	N/A
<b>JEDI Component</b>	As a Hispanic-Serving Institution (HSI), we strive to provide learning and research opportunities for all UNT students, including those from underrepresented racial and ethnic groups, disadvantaged backgrounds, and individuals with disabilities.
<b>Other Comments</b>	

<i>27. Native Plant Nursery</i>	
<b>Action Item Description</b>	Continue operation of the LLELA native plant nursery
<b>Desired Outcome</b>	<p>Produce quality native plants for onsite restoration activities. Larger projects include:</p> <ul style="list-style-type: none"> <li>- LISD 7th grade plan-a-thon - approximately 10,000 plants needed.</li> <li>- UNT Make a Difference Day and Big Event - approximately 2,000 plants per event needed</li> </ul> <p>Increase forb quantities relative to grasses being produced.</p> <p>Create a space conducive to both production as well as welcoming to the general public and educational groups.</p>
<b>Lead Entity</b>	UNT
<b>Timing</b>	Ongoing and throughout the year
<b>Collaborating Entities</b>	LISD / City of Lewisville
<b>Cost to Partners</b>	\$\$
<b>Budget &amp; Funding Sources</b>	UNT, FOL, grants (MN, NPSOT)
<b>Geographic Focus</b>	LLELA
<b>Virtual Focus</b>	QR code on signage to augment information on signs (see comments) due to probable space restrictions.
<b>JEDI Component</b>	
<b>Other Comments</b>	<p>Would like to create signage for the nursery that would:</p> <ul style="list-style-type: none"> <li>- Describe the plants being propagated</li> <li>- Habitat description</li> <li>- Root structure</li> <li>- Reason for use in restoration</li> <li>- Identification</li> <li>- Photos of various growth stages</li> <li>- Describe propagation methods</li> </ul> <p>Estimated total plant output - 16,000 plants</p>

<i>28. Coursework for LLELA Activities</i>	
<b>Action Item Description</b>	Generate credit hour-based coursework for research and/or restoration activities being conducted at LLELA (e.g., BIOL 4900, BIOL 5900, etc.)
<b>Desired Outcome</b>	<p>Increase student enrollment in credit hours for research and education opportunities at LLELA</p> <ul style="list-style-type: none"> <li>- College of Science</li> <li>- College of Education</li> </ul> <p>Create classes where the designated class location is at LLELA (LLELA classroom or LISD building in the afternoon). Designated onsite use of LLELA by UNT will help AERI to designate LLELA as their Environmental Research Field Station (or some such name). This will open grant opportunities to fund improvements to field stations. These funds could potentially contribute to a nature center.</p>
<b>Lead Entity</b>	UNT (Richard Freiheit and Amie Lund)
<b>Timing</b>	Academic year 2022-2023
<b>Collaborating Entities</b>	UNT / LISDOLA / LISD
<b>Cost to Partners</b>	\$
<b>Budget &amp; Funding Sources</b>	UNT Field station upgrade - <a href="#">Infrastructure Capacity for Biological Research</a>
<b>Geographic Focus</b>	LLELA
<b>Virtual Focus</b>	N/A
<b>JEDI Component</b>	As a Hispanic-Serving Institution (HSI), we strive to provide learning and research opportunities for all UNT students, including those from underrepresented racial and ethnic groups, disadvantaged backgrounds, and individuals with disabilities.
<b>Other Comments</b>	Courses need to be created under Richard Freiheit as Faculty.



<i>29. Restoration Plan Implementation</i>	
<b>Action Item Description</b>	Complete Action Steps described in the LLELA Restoration Plan; create opportunities for participation in completion of items
<b>Lead Entity</b>	UNT/City of Lewisville
<b>Topic</b>	Restoration
<b>Desired Outcome</b>	Continue projects that restore natural areas within the Central Area, including prairies, forested and emergent wetlands, and the Trinity River floodway.
<b>Timing</b>	Ongoing
<b>Collaborating Entities</b>	COL, FOLLELA, USACE, LISD
<b>Cost to Partners</b>	\$
<b>Budget &amp; Funding Sources</b>	Grants, COL
<b>Geographic Focus</b>	Green Centerpiece, LLELA
<b>Virtual Focus</b>	N/A
<b>JEDI Component</b>	Justice - Protect access to natural resources and experiences
<b>Other Comments</b>	

<i>30. Plant-a-thon</i>	
<b>Action Item Description</b>	Support and promote 7th grade fall activities at LLELA
<b>Desired Outcome</b>	<p>Lead activities that will:</p> <ul style="list-style-type: none"> <li>- Plant an estimated 10,000 plants.</li> <li>- Provide volunteer opportunities for UNT students to assist with planting.</li> <li>- Fundraising to support FOL efforts at LLELA</li> </ul> <p>Possible collaboration with the School of Education at UNT for source of volunteers and/or research with LISD's approval</p> <p>Provide adequate volunteers to support portions of the program beyond the planting. This would enhance the overall experience for the LISD students.</p>
<b>Lead Entity</b>	UNT/LISD/City of Lewisville
<b>Timing</b>	Ongoing, Event occurs during fall visitation.
<b>Collaborating Entities</b>	UNT/LISD/City of Lewisville/FOL
<b>Cost to Partners</b>	\$
<b>Budget &amp; Funding Sources</b>	UNT/LISD/FOL Grants
<b>Geographic Focus</b>	LLELA
<b>Virtual Focus</b>	Fundraising via Classy or other online platform
<b>JEDI Component</b>	Ongoing activity that provides unique outdoor STEM learning experience available to all enrolled 7 <sup>th</sup> grade LISD students.
<b>Other Comments</b>	Working with Carrie Allen to pinpoint possible research and grant options to support activities related to the 7th grade outdoor experience at LLELA for the fall of 2022 and beyond.

## Friends of LLELA (FOLLELA) Action Items

<i>31. FOLLELA Agreement</i>	
<b>Action Item Description</b>	Create and adopt a formal partnership agreement with the Friends of LLELA that builds a flexible framework for the partners to share responsibilities
<b>Lead Entity</b>	Friends of LLELA
<b>Topic</b>	Administrative
<b>Desired Outcome</b>	This agreement will be a clear understanding between the Friends of LLELA and the operating partners. It will outline how the partnership moves forward and will communicate all accepted expectations by the members. The document should describe the scope of work, roles, and responsibilities for those involved.
<b>Timing</b>	1 – 3 years (Short term)
<b>Collaborating Entities</b>	All Partners
<b>Cost to Partners</b>	\$
<b>Budget &amp; Funding Sources</b>	N/A
<b>Geographic Focus</b>	LLELA
<b>Virtual Focus</b>	N/A
<b>JEDI Component</b>	N/A
<b>Other Comments</b>	N/A

<i>32. Texas Master Naturalists' Agreement</i>	
<b>Action Item Description</b>	Create a partnership agreement with the Elm Fork Chapter of the Texas Master Naturalists
<b>Lead Entity</b>	Friends of LLELA
<b>Desired Outcome</b>	This agreement will be a clear understanding between the Elm Fork Chapter of Texas Master Naturalists and the operating partners. It will outline how the partnership moves forward and will communicate all accepted expectations by the members. The document should describe the scope of work, roles, and responsibilities for those involved.
<b>Timing</b>	1 – 3 years (Short term)
<b>Collaborating Entities</b>	All Partners
<b>Cost to Partners</b>	\$
<b>Budget &amp; Funding Sources</b>	N/A
<b>Geographic Focus</b>	Green Centerpiece
<b>Virtual Focus</b>	May include virtual workshops and learning opportunities
<b>JEDI Component</b>	TXMN have a program called “Be the Change” dedicated to exploring diversity, equity and inclusion opportunities in the natural resource and conservation community.
<b>Other Comments</b>	N/A

<i>33. Outreach and Inclusion Program Support</i>	
<b>Action Item Description</b>	Develop eco-friendly events, programs, and marketing campaigns that specifically appeal to underserved and underrepresented communities.
<b>Lead Entity</b>	Friends of LLELA
<b>Desired Outcome</b>	There are several small nature parks that will be developed in Lewisville over the next several years that will provide opportunities to be involved in native species design, invasive removal and planting. Most of the sites are in "park deserts" in lower income neighborhoods, giving a chance to do community education and hands-on outreach, particularly to kids, about nature.
<b>Timing</b>	1 – 3 years (Short term)
<b>Collaborating Entities</b>	All Partners
<b>Cost to Partners</b>	\$, \$\$
<b>Budget &amp; Funding Sources</b>	FOLLELA
<b>Geographic Focus</b>	Green Centerpiece
<b>Virtual Focus</b>	N/A
<b>JEDI Component</b>	Extending the Green into areas of Lewisville that are considered park deserts not only to bring the benefits of natural, open space to the neighborhood but also create a close-to-home area for residents without resources to travel to and explore places like LLELA.
<b>Other Comments</b>	Several small nature parks and natural areas such as large boulevard medians will be developed using appropriate native species design. The initial stages at each of the 13 sites will involve design, invasive removal, and planting. Members will be consulted about design issues and aid Park employees with hands-on work. Parks and Recreation personnel have begun building community relationships in these areas. As the parks are opened the role for master naturalists will change from hands-on to education programs done in partnership with the city of Lewisville. The project gives the chapter an opportunity to get directly involved in the TPWD's efforts to increase diversity within the TMN organization and the larger outdoor recreation community.

## Tracking Progress and Accomplishments

### Priorities for 2022

During 2022, the decision-making bodies of each Operating Partner will be asked to approve or endorse this Green Centerpiece Master Strategy. All Operating Partners are continuing to develop and carry out the programs they've identified in this strategy. Any additional resources needed for priority Action Items should be considered as each entity develops its FY 2022-2023 budget.

A second important priority for 2022 is the renewal of the lease for LLELA between the U.S. Army Corps of Engineers and the Operating Partners. This lease is the foundation of the partnership and the programs described in this Master Strategy. The current lease expires in 2022. Its renewal is essential to achieve the vision of this Master Strategy.

A third focus for the partnership during 2022 is the refinement of concepts for Green Centerpiece facilities, including trails, informational displays, wayfinding signage and a potential Nature Center, trailhead building or other structure. An intensive charrette focused on the desired role, function, scope, character and funding of these capital investments should be held in late 2022.

### On-going Collaborations

Representatives of the Operating Partners will continue to meet regularly to discuss pending projects and to ensure that funding is adequate and that projects are underway. At these meetings, the representatives will identify any outstanding issues and will decide on steps to address them.

Progress on Green Centerpiece implementation should be communicated to the Operating Partners' leadership, visitors and users of the Green Centerpiece and the general public. The status of these projects should be included in the City's annual Progress Report for **Lewisville 2025**. These communications will be important to reach new and diverse audiences and to continue the Green Centerpiece's appeal to its current users.

## Appendix

This appendix contains the formal documents showing approval of this updated Master Strategy by the Board of Trustees of the Lewisville Independent School District, the Lewisville City Council and the University of North Texas.



RESOLUTION OF THE LEWISVILLE INDEPENDENT SCHOOL DISTRICT BOARD OF TRUSTEES TO ADOPT THE GREEN CENTERPIECE MASTER STRATEGY UPDATE AND AUTHORIZE ADMINISTRATION TO TAKE THE APPROPRIATE ACTION TO SUPPORT AND COMPLETE THE DISTRICT INITIATIVES LISTED IN THE UPDATE

WHEREAS, it is in the best interest of the citizens of the Lewisville Independent School District (the "District") for local governments to cooperate, where possible, in the provision of governmental functions and services where such cooperation will result in a more efficient, higher quality and/or more cost-effective provision of such functions, and services; and

WHEREAS, the operating partners for the Green Centerpiece Master Strategy, U.S. Army Corps of Engineers, City of Lewisville, University of North Texas and LISD find that by working together with educational programs, outdoor activities, environmental management, and restoration in this area benefit the students of LISD. These programs in the Lewisville Lake Environmental Learning Area (LLELA) and the adjacent Lewisville Independent School District Outdoor Learning Area (LISDOLA) have provided natural learning experiences to thousands of school children and other visitors.

WHEREAS, the Board of Trustees find that the Green Centerpiece Master Strategy Update is beneficial to the public and it is in the common interest of the Green Centerpiece partners to adopt the Green Centerpiece Master Strategy Update.

NOW THEREFORE BE IT RESOLVED by the Board of Trustees of Lewisville Independent School District that the Green Centerpiece Master Strategy Update as provided in Exhibit A is a benefit to the students, staff, and community of LISD and be adopted on June 13, 2022.

By: 

Tracy Scott Miller, President  
Board of Trustees

ATTEST:

By: 

Katherine Sells, Secretary  
Board of Trustees



**LEWISVILLE**

Deep Roots. Broad Wings. Bright Future.

AFFIDAVIT OF MOTION

THE STATE OF TEXAS §

COUNTIES OF DENTON AND DALLAS §

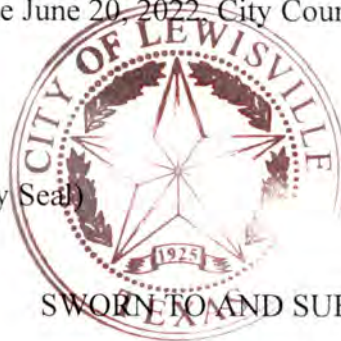
CITY OF LEWISVILLE §

BEFORE ME, the undersigned authority, on this day personally appeared Julie Worster, City Secretary of the City of Lewisville, Texas, who, after being by me duly sworn upon oath says that the following motion was made:

MOTION: Upon a motion made by Councilmember Troyer and seconded by Deputy Mayor Pro Tem Meridith, the Council voted six (6) "ayes" and no (0) "nays" to approve and adopt all items on the Consent Agenda, as recommended and as follows:

- 4. Approval of the Green Centerpiece Master Strategy.

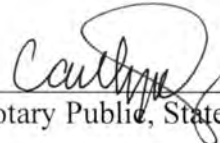
at the June 20, 2022, City Council meeting.



(City Seal)

  
\_\_\_\_\_  
City Secretary, City of Lewisville, Texas

SWORN TO AND SUBSCRIBED BEFORE ME, this the 7<sup>th</sup> day of July, 2022.

  
\_\_\_\_\_  
Notary Public, State of Texas

(Notary Seal)





July 25, 2022

Claire Powell, City Manager  
City of Lewisville  
151 W. Church Street  
Lewisville, TX 75057

Dear Claire,

The University of North Texas (UNT) is committed to growing its research, education, and restoration programs within the Lewisville Lake Environmental Learning Area (LLELA). As an operating partner of LLELA along with the U. S. Army Corps of Engineers, the City of Lewisville, and the Lewisville Independent School District (LISD), UNT is proud to have participated in developing the updated City of Lewisville's "Green Centerpiece Master Strategy" in 2022.

It is the desire of UNT to continue and grow its research, education opportunities, and operation at LLELA and, in so doing, support the presented Master Strategy. UNT looks forward to working with the partners to support the overall mission and is pleased to adopt the Master Strategy guidelines.

Sincerely,

A handwritten signature in black ink that reads "Pamela Padilla". The signature is fluid and cursive.

Pamela Padilla, Ph.D.  
Vice President of Research and Innovation  
University of North Texas  
1155 Union Circle #310979  
Denton, Texas 76203