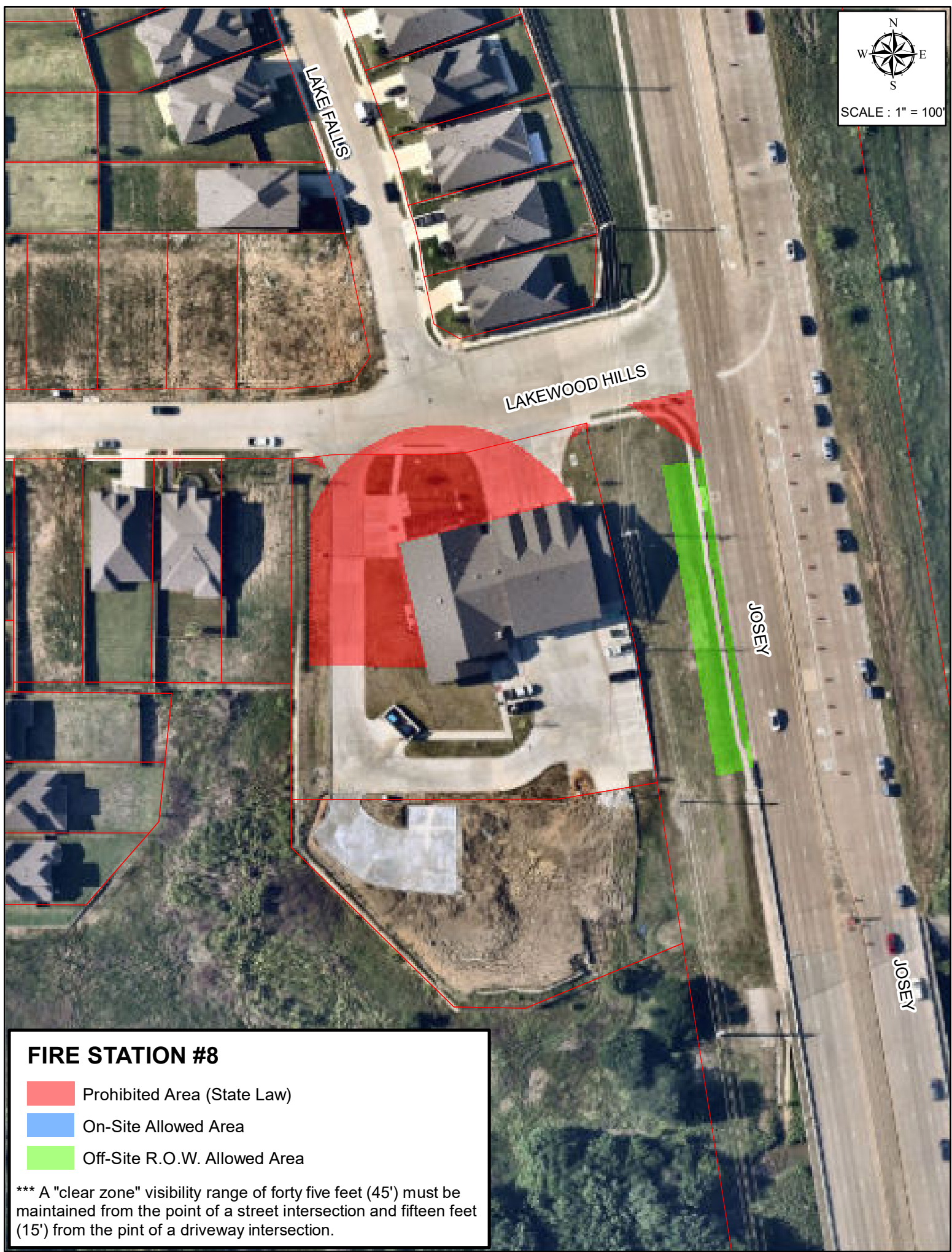

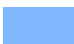





SCALE : 1" = 100'



FIRE STATION #8

-  Prohibited Area (State Law)
-  On-Site Allowed Area
-  Off-Site R.O.W. Allowed Area

*** A "clear zone" visibility range of forty five feet (45') must be maintained from the point of a street intersection and fifteen feet (15') from the pint of a driveway intersection.